

NAME:..... INDEX NO.....

SCHOOL: CANDIDATE'S SIGN.....

DATE: CLASS:

MOI HIGH SCHOOL KABARAK AND SACHO

JUNE 2017 K.C.SE AGRICULTURE PAPER 2

Time: 2 hours

INSTRUCTIONS TO CANDIDATES

- Write your name, index number, school, admission number and class in the spaces provided.
- Sign and write the date in the spaces provided above.
- Answer all the questions in section A and B.
- Answer any two questions in section C.
- Answers should be written in the spaces provided.

FOR EXAMINER'S USE ONLY

SECTIONS	QUESTIONS	MAXIMUM SCORE	CANDIDATES SCORE
A	1 – 17	30	
B	18 – 21	20	
C	22 – 24	40	
		40	
TOTAL		90	

SECTION A (30 MARKS)

Answer ALL questions in the spaces provided

1. Give **three** qualities that make the merino breed popular. **(1 ½ marks)**

.....
.....
.....
.....

2. Name **four** breeds of rabbits. **(2 marks)**

.....
.....
.....
.....

3. State **three** reasons that a farmer would prefer to use an ox-cart instead of a tractor-drawn trailer. **(2 marks)**

.....
.....
.....
.....

4. State **four** factors that influence the quality of honey. **(2 marks)**

.....
.....
.....
.....

5. Outline **four** management practices that would ensure maximum harvest in a fish pond. **(4 marks)**

.....

.....

.....

.....

6. State **six** factors that may determine the quantity of silage eaten by dairy cows. **(3 marks)**

.....

.....

.....

.....

.....

.....

7. Name **two** predisposing factors to foot rot disease in sheep. **(1 mark)**

.....

.....

8. Give **two** reasons why wells of dairy sheds should be white washed instead of painting with water or oil paints. **(1 mark)**

.....

.....

9. Give **two** reasons why tsetsefly control is considered a land reclamation method. **(1 mark)**

.....

.....

10. (a) What is the immediate host for liver fluke. **(1/2 mark)**

.....

(b) What is the duration of oestrus cycle in a cow? (½ mark)

.....

(c) What term is used to refer to the condition during calving in which the hind legs come out first? (½ mark)

.....

11. (a) Give **two** causes of soft shells in eggs. (1 mark)

.....

.....

(b) How should the feeding of bees be supplemented during a dry season? (½ mark)

.....

12. State **four** reasons for keeping livestock healthy. (2 marks)

.....

.....

.....

.....

13. Give **four** qualities of a good (2 marks)

.....

.....

.....

.....

14. State **four** disadvantages of inbreeding in livestock. (2 marks)

.....

.....

.....

.....

.....

15. Outline **four** benefits of steaming-up in livestock. **(2 marks)**

.....

.....

.....

.....

16. Name **four** reasons for castrating male calves. **(2 marks)**

.....

.....

.....

.....

17. Outline **four** uses of solar energy in a farm. **(2 marks)**

.....

.....

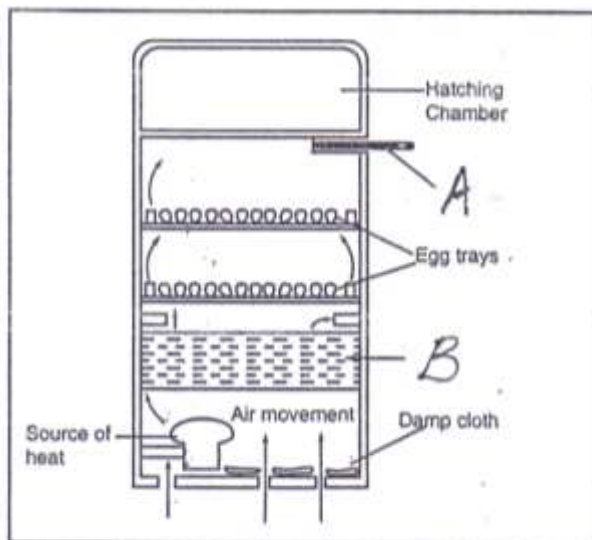
.....

.....

SECTION B (20 MARKS)

Answer ALL questions in this section in the spaces provided

18. The following is a diagram of an artificial incubator. Study it and answer questions that follow.



(a) Identify the following parts shown by letters **A** and **B**. **(2 marks)**

A

B

(b) State **three** conditions that are necessary for a successful hatching. **(3 marks)**

.....

.....

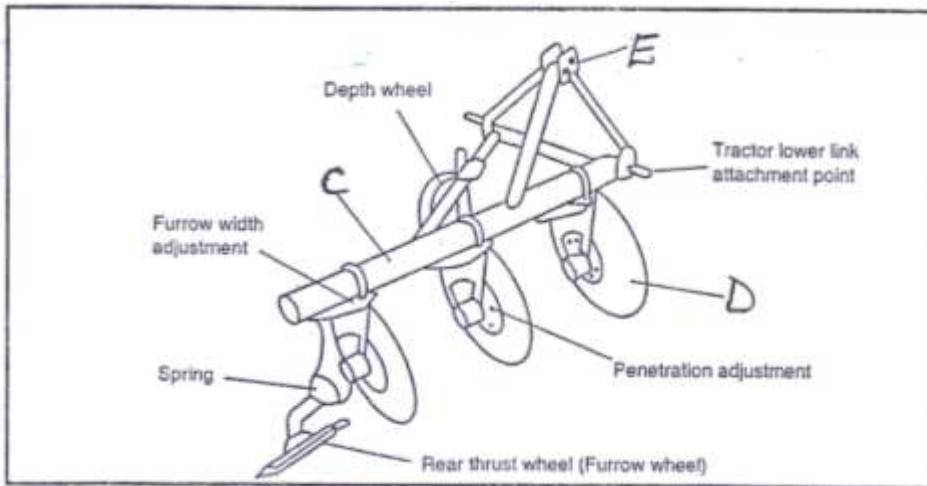
.....

.....

.....

.....

19. Study the following farm implement and answer the questions below.



(a) Identify the above implement. **(½ mark)**

.....

(b) Identify the parts shown by letters **C, D, E**. **(1 ½ marks)**

C

D

E

(c) Give **three** reasons that make the implement better in land preparation.

(3 marks)

.....

.....

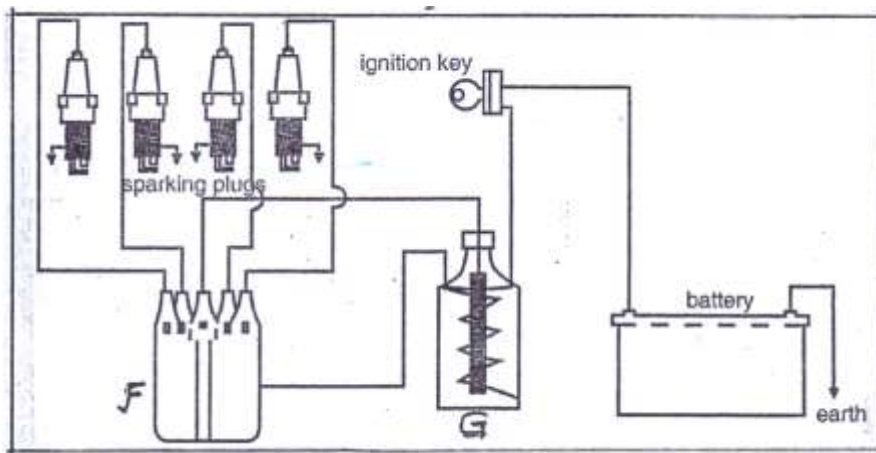
.....

.....

.....

.....

20. The following diagram is a petrol engine of a tractor ignition system, study it and answer the questions that follow.



(a) Identify the following parts **F** and **G**.

(1 mark)

F

G

(b) What is the role of part **G**?

(1 mark)

.....

.....

(c) State **three** maintenance that should be done to the tractor battery. **(3 marks)**

.....

.....

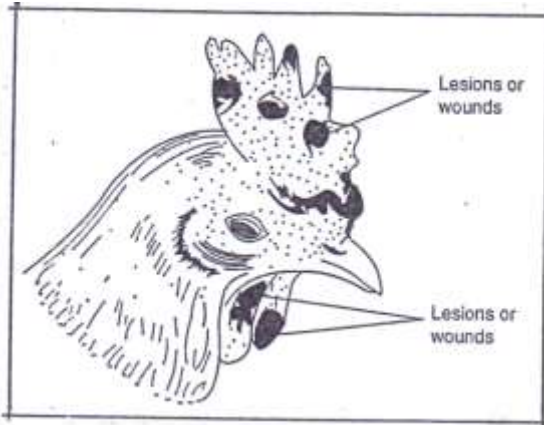
.....

.....

.....

.....

21. Study the following diagram and answer questions below.



(a) Identify the above disease.

(1 mark)

.....

(b) What causes the above disease?

(1 mark)

.....

(c) Give **two** predisposing factors of the disease.

(2 marks)

.....

.....

.....

(d) Give **one** control measure of the disease.

(1 mark)

.....

.....

.....

.....

.....

.....

.....

.....

.....

.....

(c) Describe **six** effects of parasites on livestock. **(6 marks)**

.....

.....

.....

.....

.....

.....

.....

.....

.....

.....

.....

.....

.....

.....

.....

.....

.....

.....

.....

.....

(b) Explain **five** reasons for maintaining farm tools and equipment. **(5 marks)**

.....

.....

.....

.....

.....

.....

.....

.....

.....

.....

.....

(c) Explain **six** maintenance commonly done to farm tools and equipment. **(6 marks)**

.....

.....

.....

.....

.....

.....

.....

.....

.....

.....

.....

.....

.....

.....

.....

.....

.....

.....

.....

.....

.....

.....

