

Name.....

Index No...../.....

School.....

Candidates Signature.....

Date .....

443/2  
AGRICULTURE  
Paper 2  
July/August 2009  
2 ½ Hours

**BORABU INTER - SECONDARY SCHOOL**  
**JOINT EVALUATION TEST - 2009**  
*Kenya Certificate of Secondary Education (K.C.S.E)*

443/2  
AGRICULTURE  
Paper 2  
July/August 2009  
2 Hours

**Instructions to candidates**

This paper has **THREE** sections **A, B** and **C**  
Answer **ALL** questions in sections **A** and **B**  
In section **C** answer any **TWO** questions  
**ALL** answer must be written in the spaces provided.

**FOR OFFICIAL USE ONLY**

SECTION	QN	MAX SCORE	MARK SCORE
A	1-18	30	
B	19-22	20	
C	23	20	
	24	20	
	25	20	
<b>TOTAL</b>			

*This paper consists of 12 printed pages  
Candidates should check the question paper to ensure  
that all the pages are printed as indicated and no questions are missing*

**SECTION A (30 MARKS)**

*Answer ALL questions in this section in the spaces provided.*

1. State **four** physical characteristics of dairy cattle. (2mks)

.....  
.....  
.....  
.....

2. Mention **two** tools used in cutting overgrown hooves in livestock animals (1mk)

.....  
.....

3. Outline the importance of feed additives. (1mk)

.....  
.....

4. Give **four** reasons why agriculture is

(i) A science (2mks)

.....  
.....  
.....  
.....

(ii) An art (2mks)

.....  
.....  
.....  
.....

5. Why are camels suited to working in arid and semi – arid areas? (2mks)

.....  
.....  
.....  
.....

6. What is the function of a stunning gun? (1mk)

.....  
.....

7. What is cropping in fish farming? (1mk)

.....  
.....

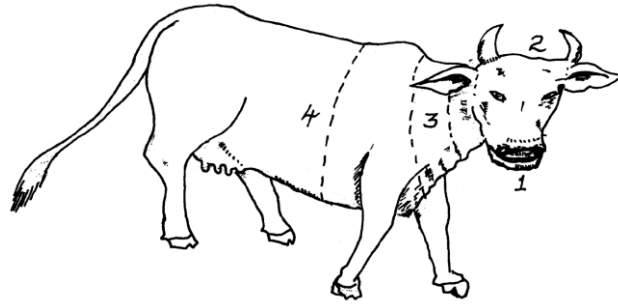
8. Name **two** breeding diseases in livestock (1mk)  
 .....  
 .....
9. State **three** qualities of a good stockman (1 ½ mks)  
 .....  
 .....  
 .....
10. What causes grass staggers in dairy cattle? (½ mk)  
 .....
11. What factors must be considered when deciding where to site a bee –hive on the farm?  
 (2mks)  
 .....  
 .....  
 .....
12. What are the functions of each of the following parts of a mouldboard plough? (3mks)
- (a) Land side  
 .....  
 .....
- (b) Mouldboard  
 .....  
 .....
- (c) Coulter  
 .....  
 .....
13. Name **two** breeds of rabbits reared in Kenya. (1mk)  
 .....  
 .....
14. Explain the following terms as they relate to livestock management.
- (i) Farrowing (1mk)  
 .....  
 .....
- (ii) Kindling (1mk)  
 .....  
 .....

15. What are transhumant pastoralists? (1mk)  
.....  
.....
16. (a) State **two** main uses of a tractor trailer (2mks)  
.....  
.....  
.....
- (b) Mention **two** maintenance practices on a tractor trailer. (1mk)  
.....  
.....
17. Define egg candling (1mk)  
.....  
.....
18. Name the management practices taken to discourage egg-eating in a poultry unit. (2mks)  
.....  
.....  
.....  
.....

**SECTION B (20 MARKS)**

*Answer ALL the questions in this section in the spaces provided.*

19. Below is a drawing of a farm animal. Study the diagram carefully and then answer the questions that follows:



- (a) On the drawing, mark with the letters indicated in brackets the parts of the animal where:
- (i) Branding should take place (B) (1mk)
  - (ii) Vaccination should be carried out (V) (1mk)
  - (iii) Body temperature of the animal should be taken (BT) (1mk)
  - (iv) Mastitis infection may occur (M) (1mk)
- (b) Name **three** areas of the animal's body where ticks are likely to be found. (3mks)

.....

.....

.....

.....

- (c) Name the parts of the animal numbered 1 – 4 (2mks)

.....

.....

.....

.....

20. State the common faults in the operation of knapsack spray. (3mks)

.....

.....

.....

.....

.....

21. (a) What is castration done in livestock ( ½ mk)

.....

.....

(b) State **four** reasons why castration is done in livestock. (4mks)

.....

.....

.....

.....

.....

.....

.....

.....

(c) Name the **three** tools used in castration of livestock. (1 ½ mks)

.....

.....

.....

22. Give **four** signs of heat observed on female rabbit. (2mks)

.....

.....

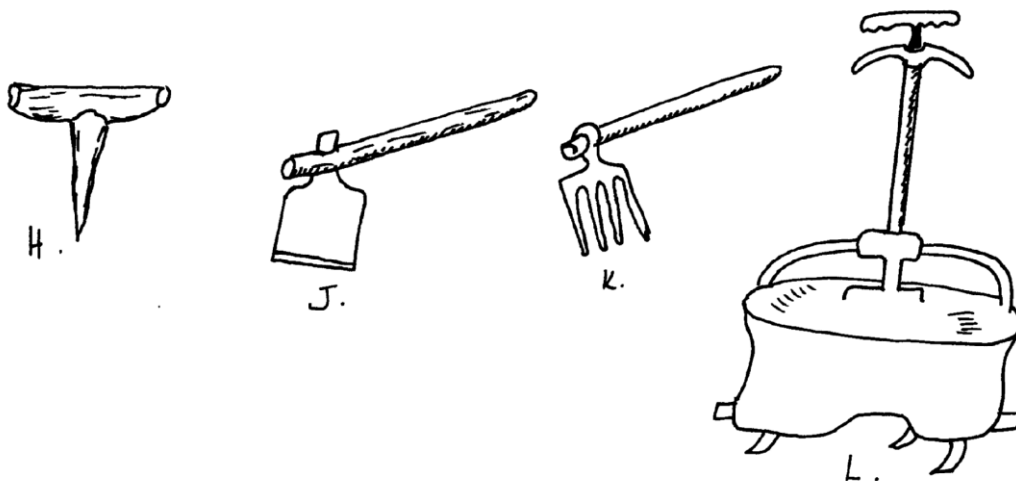
.....

.....

**SECTION C (40 MARKS)**

*Answer any TWO questions in this section.*

23. The diagrams H, J, K and L illustrate some farm tools and equipments.















.....

.....

.....

.....

.....

.....