

NAME	INDEX
SCHOOL	DATE

LIVESTOCK PRODUCTION II (SELECTION AND BREEDING)

1. 1994

(a) How does crossbreeding improve livestock production.

.....

.....

.....

.....

2. 1994

State six signs that are likely to be observed when a cow is on heat

.....

.....

.....

.....

.....

3. 1996

State four disadvantages of natural mating as a method of breeding in dairy cattle management.

.....

.....

.....

.....

4. 1997

Define the term out crossing in animal breeding.

.....
.....
.....
.....
.....

5. 1997

The diagram below shows the reproductive system of a cow. Study it carefully and answer the questions that follow.



a) i) Name the parts labeled A B and C.

A.....

B.....

C.....

ii) State the function of each of the parts labeled A and B

.....
.....
.....

b) (i) Give two methods of mating in cattle

.....
.....
.....

(ii) How long is the oestrus cycle in cattle?

.....
.....
.....
.....
.....

6. 1998

Explain the term hybrid vigour as used in livestock production.

.....
.....
.....
.....

7. 1999

Describe the factors a farmer should consider when selecting a young female pig (Gilt) for breeding.

.....
.....
.....
.....
.....
.....
.....
.....
.....
.....
.....

8. 2003

(a) Define the following terms as used in livestock breeding.

(i) Inbreeding

.....
.....
.....
.....

(ii) Out crossing

.....
.....
.....
.....

(b) Outline three disadvantages of artificial insemination in cattle

management

.....
.....
.....
.....

(c) State three desirable characteristics to be considered when selecting a heifer for milk production.

.....
.....
.....
.....

9. 2006 Q11 P2

State four factors which should be considered when selecting dairy goats for breeding. (2 marks)

.....
.....
.....
.....

10. 2007 Q24b P2

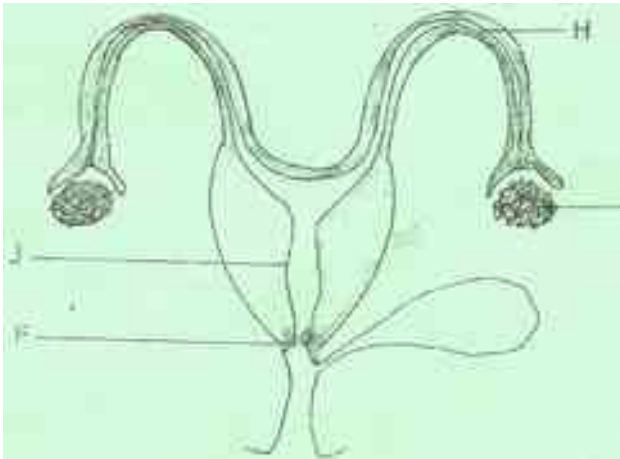
b) Outline the factors to consider when selection livestock for breeding.

.....
.....
.....
.....
.....

11. 2008 Q8 P2

What is heterosis in livestock breeding? (1 mark)

The diagram below shows the reproductive system of a cow. Study it carefully and answer the questions that follow.



(a) Name the parts labelled F and H

.....

(b) Give **two** functions of the part labelled G (2 marks).

.....

(c) Give the role of the part labelled J. (2 marks)

.....

15. 2010 Q26a P2

(a) Outline **five** advantages of artificial insemination in cattle management. (5 marks)

.....

.....
.....
.....
.....

16. 2011 Q2 P2

Name three methods that are used in selection of breeding stock in livestock production. (1½ marks)

.....
.....
.....
.....

17. 2011 Q11 P2

Name two breeding systems that can increase the frequency of high milk production genes in indigenous cattle. (1 mark)

.....
.....
.....

18. 2011 Q13 P2

Give the meaning of the following terms as used in livestock breeding:
a) recessive gene; (1 mark)

.....
.....
.....

b) epistasis. (1 mark)

.....
.....
.....

19. 2012 Q11 P2

Name two practices that are carried out when preparing ewes for mating (1 mark)

.....
.....
.....

