

NAME	INDEX
SCHOOL	DATE

LIVESTOCK PRODUCTION V – POULTRY

1. 1995

Give three methods of controlling cannibalism in a flock of layers in deep litter system.

.....

.....

.....

...

2. 1995

List four factors that should be considered when grading eggs for marketing.

.....

.....

.....

.....

....

3. 1998

a) Describe the artificial rearing of layer chicks from day old up to the end of brooding.

.....

.....

.....

.....

....

.....

.....

.....

.....

.....

....

.....
.....
.....
.....
.....
.....

b) Give four advantages of deep litter system of poultry keeping. (4 marks)

.....
.....
.....
.....
.....

8. 2005

List six qualities of eggs suitable for incubation (3 marks)

.....
.....
.....
.....
.....
.....
.....
.....

9. 2005

Describe the steps to be taken in maintaining hygiene in a deep litter poultry house. (5 marks)

.....
.....
.....
.....
.....
.....
.....
.....

10. 2006 Q15 P2

Mention six causes of stress to a flock of layers.

(3 marks)

.....
.....
.....
.....
.....
.....
.....
.....
.....
.....
.....
.....

11. 2007 Q1 P2

Give two reasons for using litter in a poultry house.

(1 mark)

.....
.....
.....
.....

12. 2007 Q19 P2

State four conditions that would encourage hens to eat eggs in poultry production

(2 marks)

.....
.....
.....
.....
.....
.....

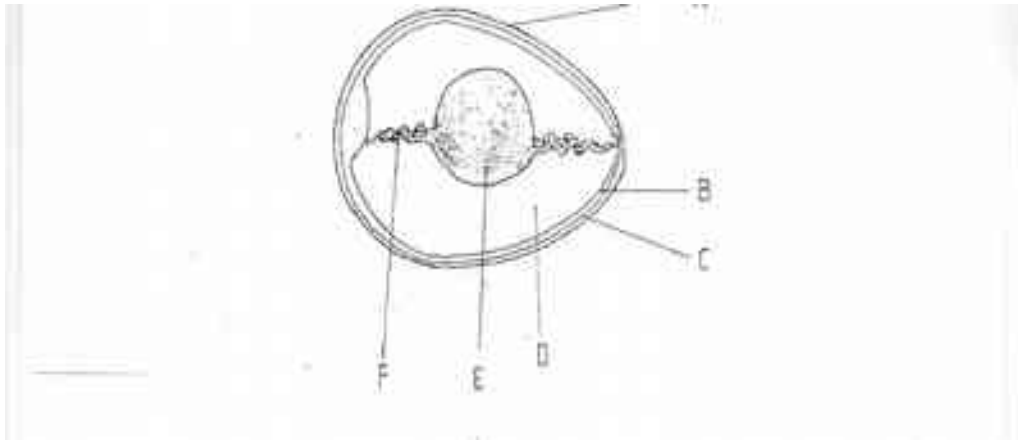
13. 2007 Q24a P2

a) Describe the advantages of the battery system of rearing layers.

(10 marks)

.....
.....
.....
.....
.....
.....
.....

The diagram below is an illustration of an egg. Study it carefully and answer the questions that follow.



- (a) Name the parts labeled B,C,D and F
- B..... (1/2 marks)
 C..... (1/2 marks)
 D..... (1/2 marks)
 F..... (1/2 marks)

- (b) State two qualities of the part labelled A that should be considered when selecting eggs for incubation. (1 mark)

.....

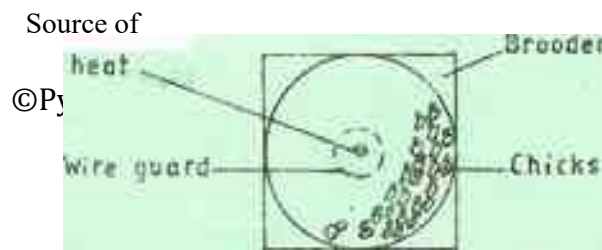
 ..

- (c) What is the function of the part labelled E in a fertilized egg? (1 mark)

.....

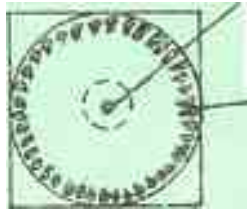
17. 2010 Q20 P2

The following illustrations show the behaviour of chicks in a brooder. Study them carefully and answer the questions that follow.



733494581

C Source of heat



(a) Explain the cause of behaviour observed in chicks for each of the illustrations labelled

A, B and C. (3 marks)

.....
.....
.....
.....
.....
.....
.....
.....
.....

(b) Give a reason for making the brooder wail round in shape. (1 mark)

.....
.....
.....

18. 2011 Q17 P2 State four signs of mite attack in poultry. (2 marks)

.....
.....
.....
.....
.....
.....
.....

19. 2011 Q24b P2 Describe poultry management under the following sub-headings:
i) causes of stress; (8 marks)

.....
.....
.....
.....
.....
.....
.....
.....
.....
.....
.....
.....
.....
.....

ii) control measures for cannibalism (7 marks)

.....
.....
.....
.....
.....
.....
.....
.....
.....
.....
.....
.....
.....
.....
.....
.....
.....
.....
.....

20. 2012 Q5 P1
Name four farm records that should be kept by a poultry farmer. (2 marks)

.....
.....
.....
.....
.....

21. 2012 Q2 P2

Give **three** reasons for candling eggs in poultry production. (1½ mark)

.....
.....
.....

22. 2012 Q10 P2

State four causes of egg eating in a flock of layers (2 marks)

.....
.....
.....
.....

23. 2012 Q13 P2

State three advantages of fold system in poultry rearing (1 ½ marks)

.....
.....
.....

24. 2012 Q23a P2

(a) Describe the management of one day old chicks in a brooder until they are eight weeks old.' (12 marks)

.....
.....
.....
.....
.....
.....
.....
.....
.....
.....
.....