

441/2
CLOTHING AND TEXTILES
PRACTICAL
PAPER 2
JULY / AUGUST 2010
TIME: 2 ½ HOURS.

AINAMOI/BELGUT EVALUATION TEST Kenya Certificate of Secondary Education 2010

441/2
CLOTHING AND TEXTILES
PAPER 2
JULY / AUGUST 2010

This paper consists of 3 printed pages candidates should check the question paper to ensure that all the pages are printed as indicated and no questions are missing.

A pattern of a child's dress is provided. You are advised to study the sketches, instructions and the layout carefully before you begin the test.

MATERIALS PROVIDED.

1. Pattern pieces for the dress.

- A – Dress front
- B – Dress back
- C – Sleeve
- D – Front Facing
- E – Back facing

2. Plain light weight cotton fabric 55cm long by 90cm wide.
3. Sewing thread to match the fabric.
4. Elastic 15cm long and 1cm wide.
5. Safety pin/ bodkin needle.

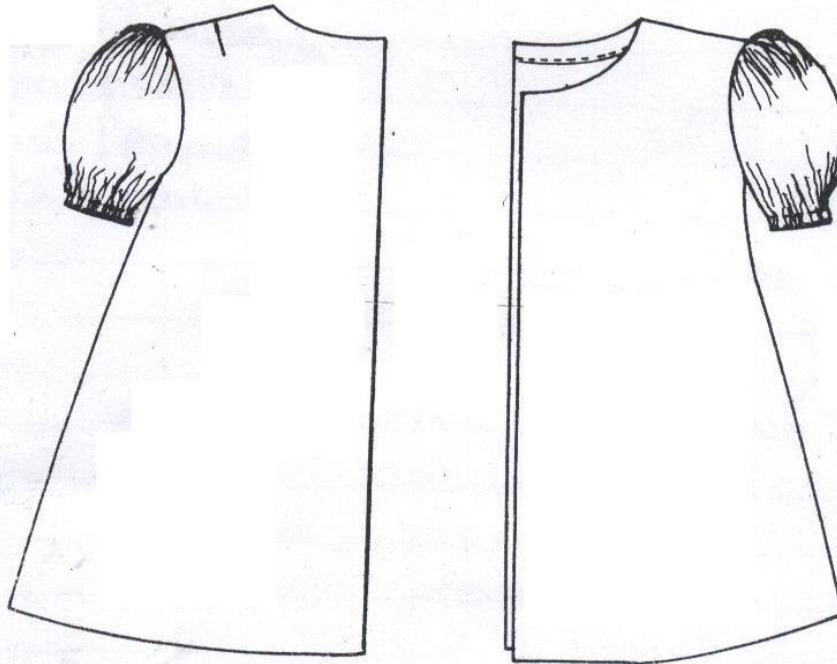
THE TEST

Using the material provided cut out and make the LEFT HALF of a child's dress to show the following:-

- a) The working of a shoulder dart
- b) The joining of the shoulder seam using machine fell seam.
- c) The joining of the side seam using a neatened open seam.
- d) The joining of the front and back facings at the shoulder and neatening the outer edge of the facing.
- e) The attaching of the facing at neckling of the dress.
- f) The joining of the sleeve seam using a French seam.
- g) The making of a casing at the hem of the sleeve leaving an insertion gap of 1.5cm, a centimeter away from the sleeve seam.
- h) The working of a gathers at the crown of the sleeve.
- i) The attaching of the sleeve.
- j) The neatening of half of the arm hole seam. (back side)
- k) The inserting of the elastic without closing the insertion gap.
- l) The cutting of a straight tear as shown on the pattern piece.
- m) The holding of the edges of the tear together using the fishbone stitch.

At the end of the examination, firmly sew onto your work, on a single fabric, a label bearing your name and index number. Remove the needles and pins from your work, then fold your work neatly and place it in the envelope provided. DO NOT put scraps of fabric in the envelope.

DRESS



BACK VIEW

FRONT VIEW

THE LAY OUT (Not drawn on scale)

