

NAME	INDEX
SCHOOL	DATE

CROP PRODUCTION (VI) FIELD PRACTICES (II)

1. **1994**
Name two field pests and two diseases of millet.
.....
.....
2. **1996**
Why is it advisable to apply a straight nitrogenous fertilizer to a crop of maize at a height of 30 – 45cm?
.....
.....
3. **1996**
Which disease causes a mass of dark spores on the flowering parts of maize?
.....
4. **1996**
State any four non – chemical methods of controlling storages pests in a maize granary.
.....
.....
.....
.....
5. **1996**
List four insect pests of maize in storage.
.....
.....
.....
.....
.....

6. **1996 PP2**

The diagram below labeled G, H, J and K shows different stages of cotton fruit.



i) Rearrange the label G, H, J, and K to show the correct sequence in which the cotton fruit develops.

.....
.....
.....

ii) What would be the effect of attack by cotton boll worms at the stage labeled K?

.....
.....
.....

iii) State two conditions that should be observed when harvesting to ensure that cotton picked is of high quality.

.....
.....

iv) Name the two products which are obtained after processing cotton.

.....
.....
.....

7. 1997

State four practices used to control maize streak in the field.

.....
.....
.....
.....
.....

8. 1998

i) State two cultural methods of controlling pests in an established field of sorghum.

.....
.....
.....

ii) List any four insect pests that attack maize in the field.

.....
.....
.....
.....
.....

9. 2000

Give four ways of controlling weeds in a field of maize.

.....
.....
.....
.....
.....

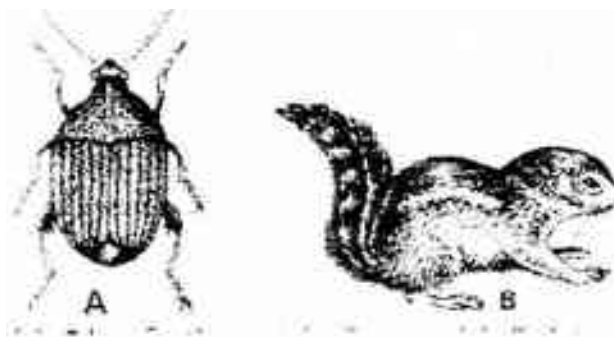
10. 2000

Give four control measures of maize streak virus.

.....
.....
.....
.....

11. 2006 Q20 P1

Two maize pests are shown in the diagram below. Study them and answer the questions that follow,



(a) Identify the pests in the diagram labeled A and B

(1 mark)

-
- (b) At what stage of maize production does each damage the crop?
.....
- (c) Give one way of controlling each of the pests in the field
.....

12. 2007 Q22a P1

(a) Describe the field production of irrigated rice under the following sub-headings

(i) Land preparation (7 marks)

.....
.....
.....
.....
.....
.....
.....
.....

(ii) Water control (6 marks)

.....
.....
.....
.....
.....

13. 2009 Q13 P1

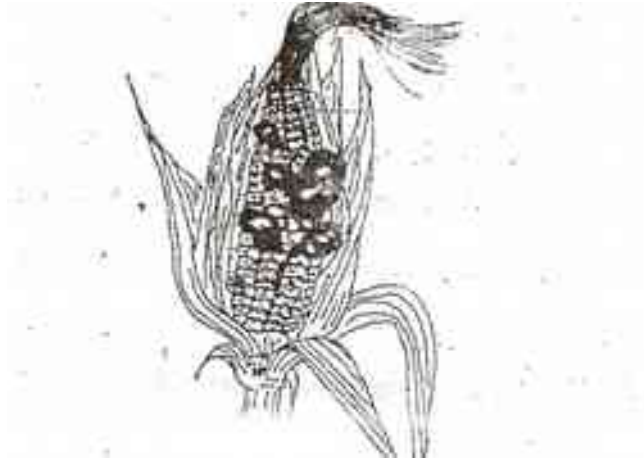
Distinguish between the terms hybrid and composite as used in maize breeding.

(1 mark)

.....
.....

14. 2009 Q22 P1

The diagram bellow illustrates a maize cob attacked by a disease. Study it carefully and answer the questions that follow.



(a) Identify the disease (1 mark)

.....

(b) Apart from maize, give two other crops that may be attacked by the disease. (1 mark)

.....

.....

.....

(c) State two methods of controlling the disease (2 marks)

.....

.....

.....

15. 2009 Q28a P1

(a) Describe the production of dry beans (*phaseolus vulgaris*) under the following sub heading:

(i) Varieties common in Kenya (2 marks)

.....

.....

.....

(ii) Selection and preparation of planting materials (3 marks)

.....

.....

.....

.....

(iii) Planting and weeding (5 marks)

.....
.....
.....
.....
.....
.....
.....

16. 2010 24b P1

(i) Explain four precautions that should be observed when harvesting cotton. (4 marks)

.....
.....
.....
.....
.....
.....
.....
.....
.....
.....
.....
.....
.....
.....
.....

(ii) Describe the harvesting of sugar cane. (3 marks)

.....
.....
.....
.....
.....
.....
.....

17. 2011 Q27b P1

(b) (i) Describe the procedure of harvesting pyrethrum (4 marks)

.....
.....
.....

.....
.....
.....
.....

(ii) Explain the precautions that should be observed during the harvesting of pyrethrum (3 marks)

.....
.....
.....
.....
.....
.....
.....