

Name.....

Index No.

School

Date.....

Sign.....

231/3
BIOLOGY
PRACTICAL
PAPER 3
JULY / AUGUST 2010
Time: 1 ¾ Hours

BUTERE DISTRICT JOINT EVALUATION TEST - 2010
Kenya Certificate of Secondary Education (K.C.S.E)

BIOLOGY
PRACTICAL
PAPER 3
JULY / AUGUST 2010
Time: 1 ¾ Hours

INSTRUCTIONS TO CANDIDATES

- Write your name and Index number in the spaces provided at the top of this page
- Sign and write the date of examination
- Answer all questions
- You are required to spend the first 15 minutes of 1 ¾ hrs allowed for this paper reading the whole paper carefully before commencing your work.
- Answers must be written in the spaces provided in the question paper
- Additional pages must not be inserted.

FOR EXAMINERS USE ONLY

QUESTION	Max Score	Candidate Score
1	15	
2	12	
3	13	
TOTAL	40	

This paper consists of 8 printed pages. Candidates should check the question paper to ensure that all pages are printed as indicated and no questions are missing.

1. You are provided with a suspension labelled M which contains food substances. You are also provided with Iodine solution, Benedict's solution, Dilute hydrochloric acid, dilute sodium hydrogen carbonate, copper sulphate and dilute sodium hydroxide. Carry out tests to determine the food substances in M. (14 marks)

Food substrate being tested for	Procedure	Observation	Conclusion

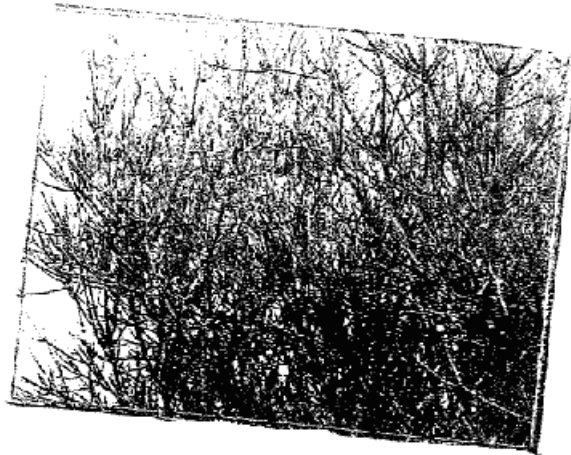
PHOTOGRAPH K



P



M



N

PHOTOGRAPH J



3

2. Photographs J and K are taken from certain organs of plants. Study them carefully and use them to answer the questions below.

(a) (i) With reference to photograph J, what is the name of the swelling marked 3? (1 mark)

.....
.....

(ii) Name the organisms that would be found in these swellings. (1 mark)

.....
.....

(iii) Explain the relationship that exists between the named organisms and the plant. (3 marks)

.....
.....
.....
.....
.....
.....

(b) (i) With reference to photograph K, state the habitats of the leaves labelled. (3 marks)

M:

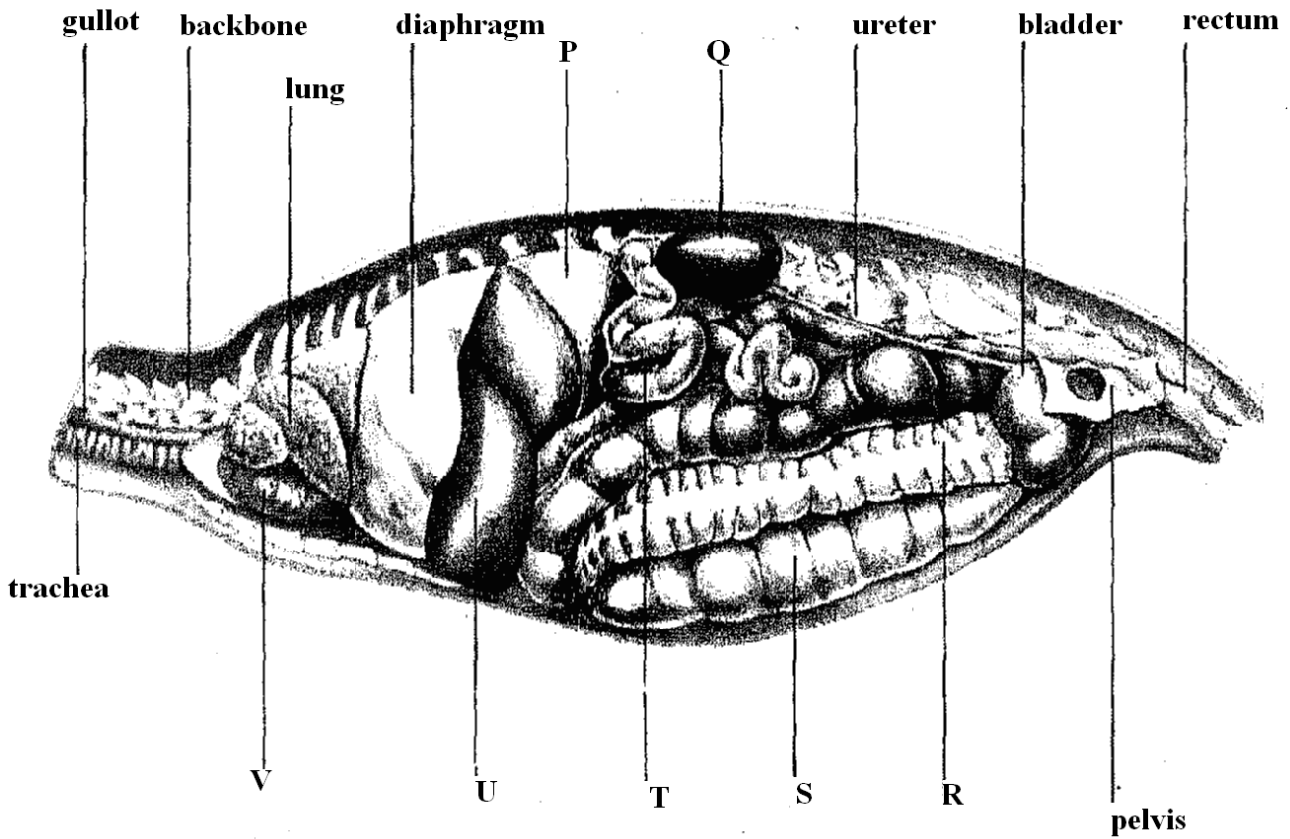
N:

P:

(ii) Using observable features state three ways in which leaf M is adapted to survive in its habitat. (3 marks)

.....
.....

PHOTOGRAPH Z



3. The photograph Z shows some of the main structures found inside the body of a mammal as seen from the side. Study it carefully.

(a) (i) Label the parts marked P — V (7 marks)

- P.....
- Q.....
- R.....
- S.....
- T.....
- U.....
- V.....

(ii) On the photograph, indicate where absorption of water by the body takes place. (1mk)

(b) (i) State the function of the part marked T. (2 marks)

.....

.....

.....

.....

(ii) State two ways in which the part marked T in b(i) above is adapted to perform its function.

(2 marks)

.....
.....
.....
.....

(c) State two functions of the part marked Q.

(2 marks)

.....
.....
.....
.....

