

NAME.....INDEX NO.....

231/3
BIOLOGY
PRACTICAL
PAPER 3
JULY/AUGUST 2010

TIME 1 ¾ HOURS

KENYA CERTIFICATE OF SECONDARY EDUCATION
FORM FOUR EVALUATION EXAMINATION

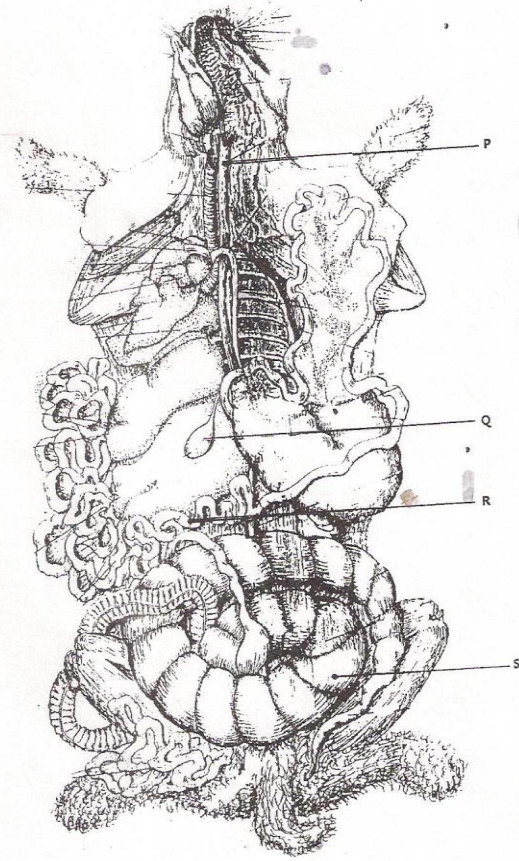
231/3
BIOLOGY
PRACTICAL
PAPER 3
JULY/AUGUST 2010

INSTRUCTIONS TO CANDIDATES

- Write your name and index number in the spaces provided at the top of this page.
- Answer all questions. You are required to spend the first 15 minutes of the 1 ¼ hours allowed for this paper reading the whole paper carefully before commencing your work.
- Answers must be written in the spaces provided in the question paper. Additional Pages must not be inserted.

FOR EXAMINERS USE ONLY

QUESTION	MAXIMUM SCORE	CANDIDATE'S SCORE
1	12	
2	16	
3	12	
TOTAL	40	



Above is a drawing representing a dissected organism, study it and answer the questions below.

a) Name the parts labelled P and Q (2 marks)
 P

.....

Q

.....

b) From the observable features only, explain the adaptations of the part labelled R to its functions. (3 marks)

.....

c) Identify and explain the role of the part labelled S (3 marks)

Identify.....

.....

Role.....

.....

.....

d) With reasons classify the organism into; (4 marks)

(i) Kingdom

.....

.....

Reason

.....

.....

(ii) Class

.....

.....

Reason

.....

.....

e) (i) In the photograph identify the heart and the trachea. (2 marks)

(ii) State two adaptations of the trachea to its functions (2 marks)

.....

.....

.....

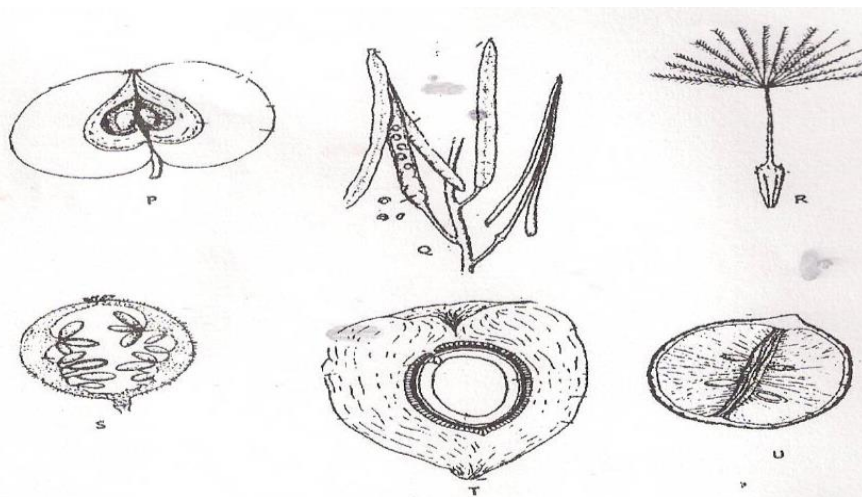
.....

2. You are provided with solution P.

Using the reagents provided, test for food substances in the solution. Record the food substance, procedure, observations and conclusions in the table below. (12 marks)

Food substance	Procedure	Observation	Conclusion

3.



3. Above are photographs labelled P, Q, R, S, T and U of fruits obtained from different plants. Examine them and answer the questions underneath.

a) With reasons, Determine the modes of dispersal for the fruits labelled Q, R and S (6 marks)

Q.....
.....

Reason.....
.....
.....

R.....
.....

Reason.....
.....

S.....
.....

Reason.....
.....

b) State the form of placentation in Q, S, T and U. (4 marks)

Q.....

S.....

T.....

U.....

b) With a reason, identify the type of fruit represented by specimen U (2 marks)

Type.....

Reason.....
.....
.....