

Name.....Index Number.....

443/2
AGRICULTURE
Paper 2
July/Aug. 2011
2 hours

Candidate's Signature.....
Date.....

THE BARINGO COUNTY EDUCATIONAL JOINT EXAMINATION
Kenya Certificate of Secondary Education
AGRICULTURE
Paper 2
2 hours

Instructions to candidates

Write your name and index number in the spaces provided above.

Sign and write the date of examination in the spaces provided above.

This paper consists of three sections: A, B and C.

Answer all the questions in sections A and B and any two questions from section C.

Answers should be written in the spaces provided.

For Examiner's Use only

Section	Question	Maximum Score	Candidate's Score
A	1-19	30	
B	20-25	20	
C		20	
		20	
Total Score		90	

This paper consists of 15 printed pages.

Candidates should check the question to ascertain that all the pages are printed as indicated and no questions are missing.

SECTION A (30 Marks)

Answer ALL the questions in this section in the spaces provided.

1. Name the causal agent of coccidiosis disease in poultry (1/2mks)
.....
.....

2. State **four** properties of concrete that make it suitable for construction of farm structure. (2mks)
.....
.....
.....
.....

3. (a) Name **two** dual purpose breeds of sheep (1mk)
.....
.....

(b) Give the distinguishing colour for each of the following breeds of livestock
(i) Wessex saddle back (1mk)
.....
.....

(ii) A Jersey cow (1mk)
.....
.....

4. State **four** reasons for culling a bull used for breeding (2mks)
.....
.....
.....
.....

5. List **four** characteristics of a good creep feed. (2mks)
.....
.....
.....
.....

6. Give **two** features that enable the gizzard to carry out its functions effectively. (1mk)

.....
.....

7. State **four** factors that determine the quality of honey (1mk)

.....
.....
.....

8. Give **four** ways of restoring a sick animal to good health? (2mks)

.....
.....
.....
.....

9. State any **two** methods of controlling coccidiosis in poultry (1mk)

.....
.....

10. Differentiate between the following

(i) Tin snip and pliers (1mk)

.....
.....

11. List **three** maintenance practices carried out on a seeder (1¹/₂mks)

.....
.....
.....

12. Give **three** advantages of using biogas as source of power in the farm (1¹/₂mks)

.....
.....
.....
.....

13. Give **two** types of air cleaners used in a tractor engine (1mk)
.....
.....

14. State **two** factors that would determine the use of a jembe instead of a disc plough (1mk)
.....
.....

15. Name **four** plumbing tools used for installing galvanized water pipes (2mks)
.....
.....
.....
.....

16. Give **two** reasons why single housing is recommended in calfs. (1mk)
.....
.....

17. Give **two** reason for spreading a polythene paper (PVC)on the slab of permanent farm building (1mk)
.....
.....
.....
.....

18. Distinguish between the following practices as used in sheep management livestock production

(i) Flushing and steaming up in sheep management (2mks)
.....
.....

(ii) Pen and Drift lambing in sheep management (2mks)
.....
.....

19. List **three** biotic factors that affect livestock production in Kenya (1½mks)

.....

.....

.....

.....

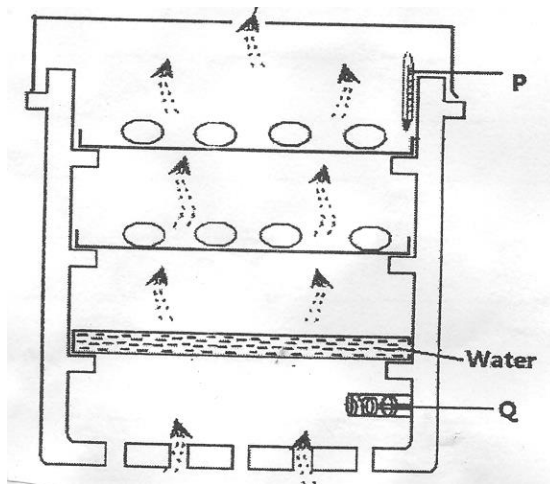
.....

.....

SECTION B (20 Marks)

Answer All the questions in this section in the spaces provided.

20. Study the diagram of artificial incubator below and answer the questions that follow.



a) Identify the parts labeled **P** and **Q** (1mk)

P.....

Q.....

b) Why is water provided in the incubator (1mk)

.....

.....

c) What other factor not observed in the diagram has been provided. (1mk)

.....

.....

d) State one advantage of an artificial incubator

(1mk)

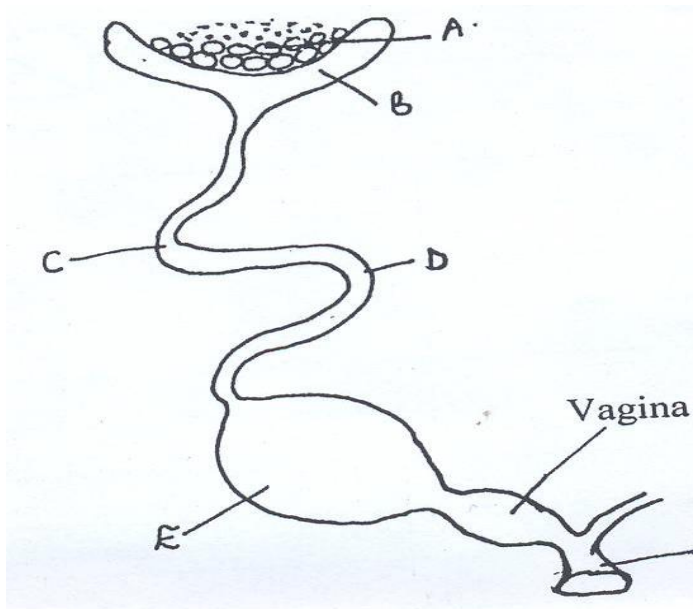
.....

.....

.....

.....

21. Study the diagram of the reproductive system of a hen shown below and answer the questions that follow.



(i) Name the parts labeled **A**, **B**, **C** and **E**

(1mk)

.....

.....

.....

.....

(ii) State **two** changes that occur on the development of the yolk at the part labeled **E**

(1mk)

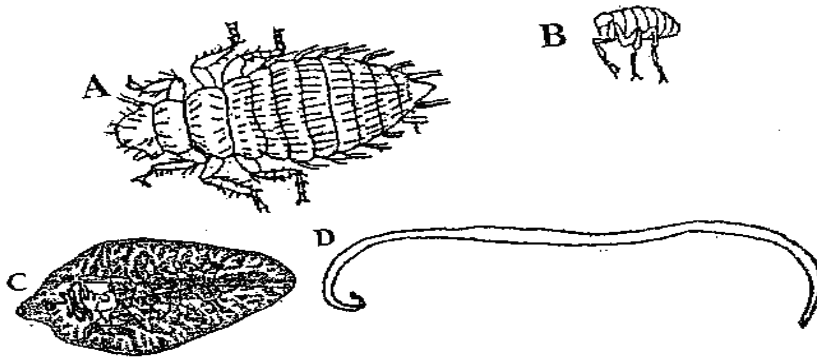
.....

.....

(iii) What happens if blood spot drops at the part labeled **A** during egg formation. (1/2mk)

.....
.....

22. (a) Identify each of the parasites of livestock shown below. (2mks)



A.....
B.....
C.....
D.....

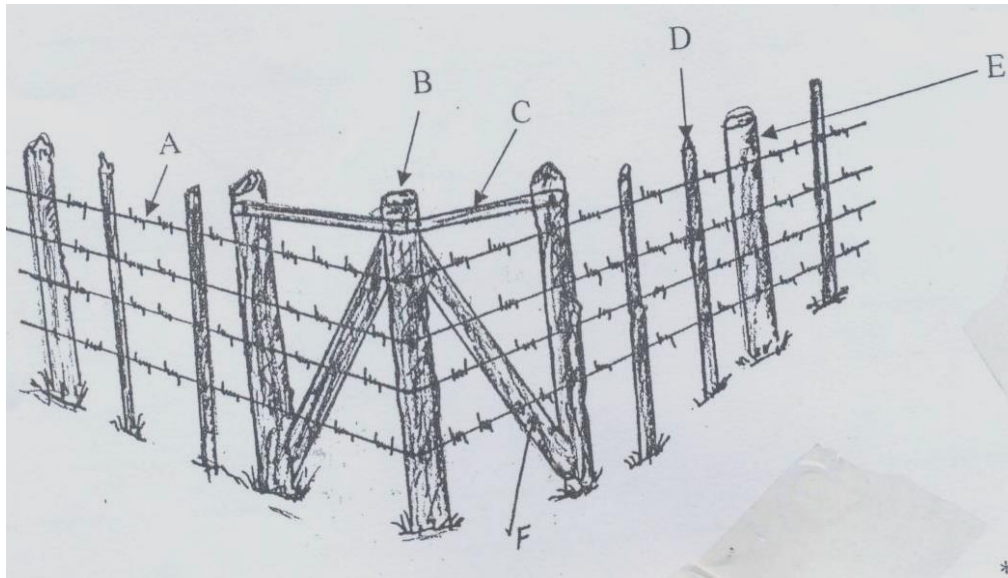
(b) What is the difference between parasites **A** and **B** and parasites **C** and **D**? (1mk)

.....
.....

(c) Suggest an effective control measure of the parasite labeled **C** (1mk)

.....
.....

23. Below is a diagram of a farm structure. Use it to answer the questions that follow.



a) Identify the farm structure.

($\frac{1}{2}$ mk)

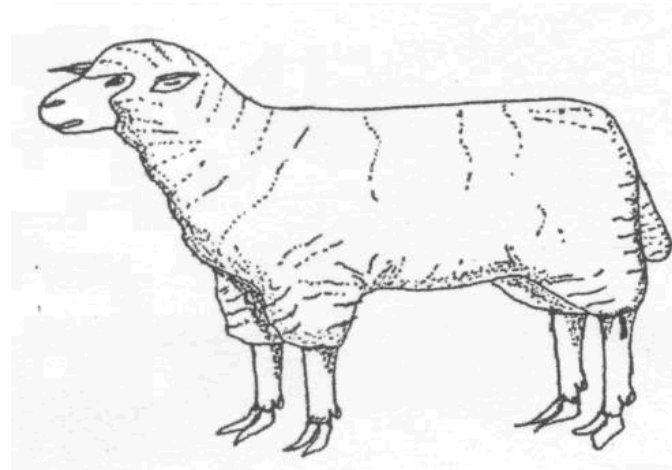
.....
.....

b) Name the parts labeled **B, C, D, E** and **F**

($2\frac{1}{2}$ mks)

.....
.....
.....
.....

24. The illustration below shows the external features of a sheep. Study it and answer the questions that follow.



a) Classify the sheep represented above by type. (1mk)

.....
.....

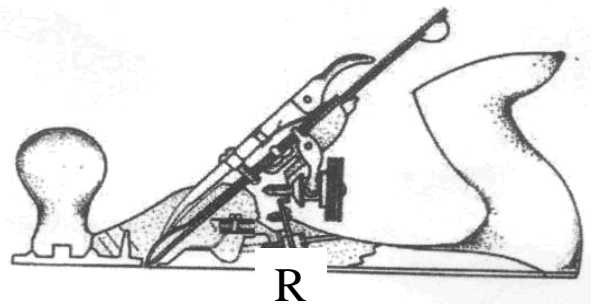
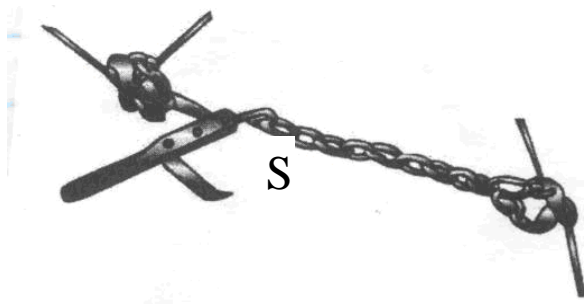
b) Identify a routine management practice that needs to be carried out on the animal shown above. (1mk)

.....
.....

c) Mark on the illustration above the right position for raddling (1mk)

.....
.....

25. **S** and **R** are diagrams of farm tools. Use them to answer questions that follow.



a) Give the identity of each tool. (1mk)

S.....

R.....

b) State the appropriate use of tool **R** (1mk)

.....
.....

c) Name another tool used together with tools **S**. (1/2mk)

.....
.....

d) Give two maintenance practice for tool **R** (1mk)

.....
.....

SECTION C (40 Marks)

Answer Any two questions from this section in the spaces provided after each question.

26. a) Outline **five** advantages of embryo transplant technology in cattle management (5mks)

.....

.....

.....

.....

.....

.....

b) Describe **ten** signs of new castle disease in poultry (10mks)

.....

.....

.....

.....

.....

.....

.....

.....

.....

.....

.....

.....

.....

.....

.....

.....

.....

.....

.....

.....

.....

.....

c) Give **five** functions of vitamins in livestock production. (5mks)

.....
.....
.....
.....
.....
.....

27. (a) State one function of each of the following parts of a spry race (6mks)

(i) Sidewalls

.....
.....

(ii) Delivery pipes

.....
.....

(iii) Guard rails

.....
.....

(iv) Pressure gauge

.....
.....

(v) Control pipe

.....
.....

(vi) Control pipe

.....
.....

(b) Explain **eight** short term service practices carried out in a tractor (8mks)

.....

.....

.....

.....

.....

.....

.....

.....

.....

.....

.....

.....

.....

.....

.....

.....

.....

.....

.....

(c) Discuss **six** physiological body functions to be examined to determine a good health cow (6mks)

.....

.....

.....

.....

.....

.....

.....

.....

.....

.....

.....

.....

28. (a) Discuss management of layers in poultry production

(12mks)

.....

.....

.....

.....

.....

.....

.....

.....

.....

.....

.....

.....

.....

.....

.....

.....

.....

.....

.....

.....

.....

.....

(b) (i) State **four** reasons why colostrum is important to young animals within the first week of birth (4mks)

.....

.....

.....

.....

.....

.....

.....

.....

.....

.....

.....

(ii) Explain **four** factors considered in sorting and grading eggs for market. (4mks)

.....

.....

.....

.....

.....

.....

.....

.....

.....

.....

.....