

Name

Index Number

School

Candidate's Signature

443/2

Date

AGRICULTURE

Paper 2

2015

2 hours

MAKUENI COUNTY KCSE 2015 PREPARATORY EXAMINATION

Kenya Certificate of Secondary Education

AGRICULTURE

Paper 2

2 hours

Instructions to candidates

- (a) Write your name and index number in the spaces provided above.
- (b) Sign and write the date of examination in the spaces provided above.
- (c) This paper consists of **three** sections: **A, B and C**.
- (d) Answer **all** the questions in sections **A and B**.
- (e) Answer any **two** questions from section **C**.
- (f) Answers should be written in the spaces provided in this booklet.
- (g) **This paper consists of 10 printed pages.**
- (h) **Candidates should check the question paper to ascertain that all the pages are printed as indicated and that no questions are missing.**

For Examiner's Use Only

Section	Questions	Maximum Score	Candidate's Score
A	1-19	30	
B	20-23	20	
C		20	
		20	
Total Score		90	

Sponsored by H.E. Prof. Kivutha Kibwana, Governor, Makueni County.

TURN OVER

SECTION A (30 marks)

Answer *all* the questions in this section in the spaces given.

1. Name **four** farm structures used for the control of livestock parasites. (2 marks)

.....

.....

.....

.....

2. Explain the meaning of dry cow therapy as used in livestock production. (1 mark)

.....

.....

3. State **three** conditions in a breeding boar which may necessitate culling. (1 mark)

.....

.....

.....

4. State **two** reasons why lactating dairy goats require calcium. (1 mark)

.....

.....

5. Identify **four** undesirable characteristics of indigenous cattle that make them unpopular with farmers. (2 marks)

.....

.....

.....

.....

6. Name the intermediate host of liver flukes. (1 mark)

.....

7. Distinguish between stress and vice, as used in livestock production. (1 mark)

.....

.....

8. Give the reason why eggs are packed with the broad end facing upwards. (1 mark)

.....

9. State **four** factors affecting milk composition. (2 marks)

.....

.....

.....

.....

10. Outline **four** advantages of using animal power over tractor power. (2 marks)

.....

.....

.....

.....

11. State the function of each of the following tools:

(a) Pruning saw (½ mark)

.....

(b) Dibber (½ mark)

.....

12. Give **four** requirements of a produce store. (2 marks)

.....
.....
.....
.....

13. State **four** control measures of tsetse fly. (2 marks)

.....
.....
.....
.....

14. Name **one** sheep breed which is resistant to foot rot and worm infestation. (1 mark)

.....

15. State the ratio of cement, sand and aggregate used in preparation of concrete blocks. (1 mark)

.....

16. State **four** symptoms of scours in a calf. (2 marks)

.....
.....
.....
.....

17. State four factors that determine the amount of water taken by an animal. (2 marks)

.....
.....
.....
.....

18. Name **four** equipment used when harvesting honey from Kenya top bar hive. (2 marks)

.....

.....

.....

.....

19. State **five** advantages of artificial insemination. (2 ½ marks)

.....

.....

.....

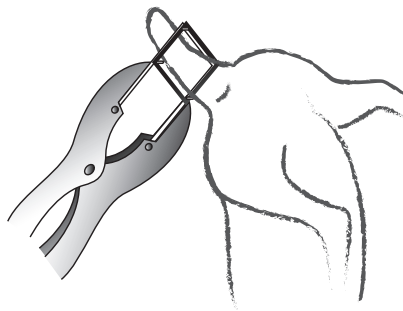
.....

.....

SECTION B (20 marks)

*Answer **all** questions in this section in the spaces provided.*

20. Study the diagram below and answer the questions that follow.



(a) Identify the operation shown in the diagram. (1 mark)

.....

.....

(b) Name the tool and equipment used. (1 mark)

.....

.....

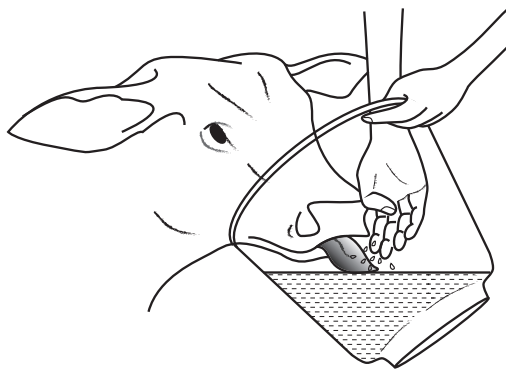
(c) Give **three** reasons why the operation is practised in Kenya. (3 marks)

.....

.....

.....

21. The diagram below represents an operation carried out on livestock. Use it to answer the questions that follow.



(a) Identify the operation. (1 mark)

.....

(b) Outline the procedure for the operation shown in the diagram above. (4 marks)

.....

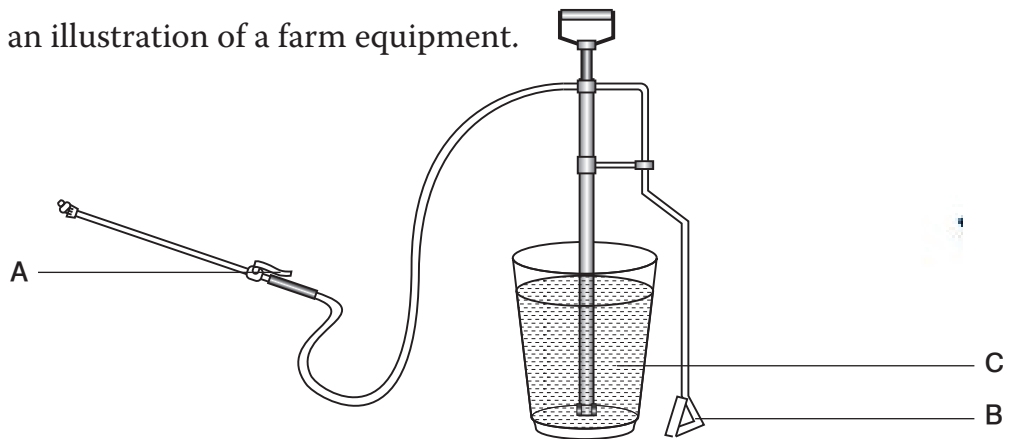
.....

.....

.....

.....

22. Below is an illustration of a farm equipment.



(a) Identify the above equipment. (1 mark)

.....

(b) Name the parts labelled A and C. (2 marks)

A

C

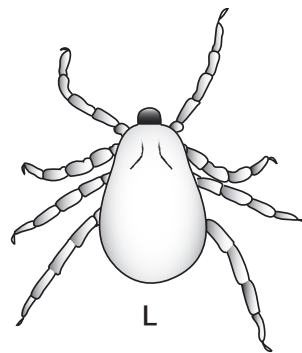
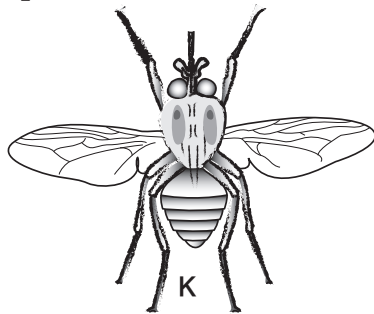
(c) Give **two** maintenance practices for the above equipment. (2 marks)

.....

.....

.....

23. Below are illustrations of parasites which transmit disease in livestock. Study them carefully and answer the questions that follow.



(a) Identify specimens K and L. (1 mark)

K.....

L.....

(b) Name **one** disease each, transmitted by the parasites K and L. (2 marks)

K.....

L.....

(c) State **two** mechanical control measures for parasite L. (2 marks)

.....

.....

SECTION C (40 marks)

Answer any two questions.

24. (a) Discuss the construction of a dairy shed under the following topics:

(i) Construction material (4 marks)

.....

.....

.....

.....

.....

(ii) **Six** maintenance practices of the structure (6 marks)

.....

.....

.....

.....

.....

.....

(b) Outline **five** differences between a good layer and a poor layer. (10 marks)

.....

.....

.....

.....

.....

.....

.....

.....

.....
.....

25. (a) Describe the management of pigs during parturition. (10 marks)

.....
.....
.....
.....
.....
.....
.....
.....
.....
.....
.....
.....

(b) Give the differences between a petrol engine and a diesel engine. (10 marks)

.....
.....
.....
.....
.....
.....
.....
.....
.....
.....

