

Name.....

Index No...../.....

School.....

Date

Candidate's Signature.....

443/2

AGRICULTURE

Paper 2

JULY / AUGUST 2012

Time: 2 Hours

MANGA DISTRICT JOINT EVALUATION EXAM– 2012

Kenya Certificate of Secondary Education (K.C.S.E)

443/2

AGRICULTURE

Paper 2

JULY / AUGUST 2012

Time: 2 Hours

INSTRUCTIONS TO CANDIDATES

1. Write your name and index number in the spaces provided.
2. Sign and write the date of examination in the spaces provided above
3. This paper consists of three sections; **A**, **B** and **C**
4. Answer **ALL** the questions in sections **A** and **B**
5. Answer **two** questions from section **C**

FOR EXAMINER'S USE ONLY

SECTION	QUESTIONS	MAXIMUM SCORE	CANDIDATE'S SCORE
A	1 -19	30	
B	20 – 23	20	
	24 - 26	40	
TOTAL SCORE		90	

*This paper consists of 12 printed pages.
Candidates should check the question paper to ensure that all
pages are printed as indicated and no questions are missing*

Section A (30 MARKS)

Answer all questions in this section in the spaces provided.

1. Name two dairy goats breeds reared in Kenya. (1 Mark)
.....
.....
2. Give two reasons why Jersey breed of cattle are better suited to arid areas than Friesians cattle. (1 Mark)
.....
.....
3. State two maintenance practices of milking equipments. (1 Mark)
.....
.....
4. Name four components of power transmission system of a tractor. (2 Marks)
.....
.....
.....
.....
5. State four advantages of treating timber before construction. (2 Marks)
.....
.....
.....
.....
6. Give three ways of stimulating milk let down in a dairy cow. (1 ½ Marks)
.....
.....
.....
.....
7. List four functions of calcium in dairy cows. (2 Marks)
.....
.....
.....
.....
8. Name two practices aimed at keeping birds busy in a deep liner system. (1 Mark)
.....
.....
.....
.....

9. Give four symptoms of mastitis visible on the black plate in a strip cup. (2 Mks)
.....
.....
.....
.....
10. State any four signs of parturition in a cow. (2 Marks)
.....
.....
.....
.....
11. Name two points of attachment of the tractor drawn implements. (1 Mark)
.....
.....
12. Outline four importance of the lubrication system in a tractor. (2 Marks)
.....
.....
.....
.....
13. State two methods of stocking a beehive. (1 Mark)
.....
.....
14. State four structural requirements of a rabbit hutch. (2 Marks)
.....
.....
.....
.....
15. State four signs of stress in a flock of chicken. (2 Marks)
.....
.....
.....
.....

16. State four major characteristics of succulent roughages. (2 Marks)

.....
.....
.....
.....

17. Name the farm tool and equipment used for the practices mentioned below. (2 Marks)

i) Deworming livestock orally using tablets.

.....
.....

ii) Cutting off wolf - teeth in piglets.

.....
.....

iii) Weighing farm produce and inputs.

.....
.....

iv) Measuring distances and lengths.

.....
.....

18. Name two diseases transmitted by the brown ear tick. (1 Mark)

.....
.....
.....

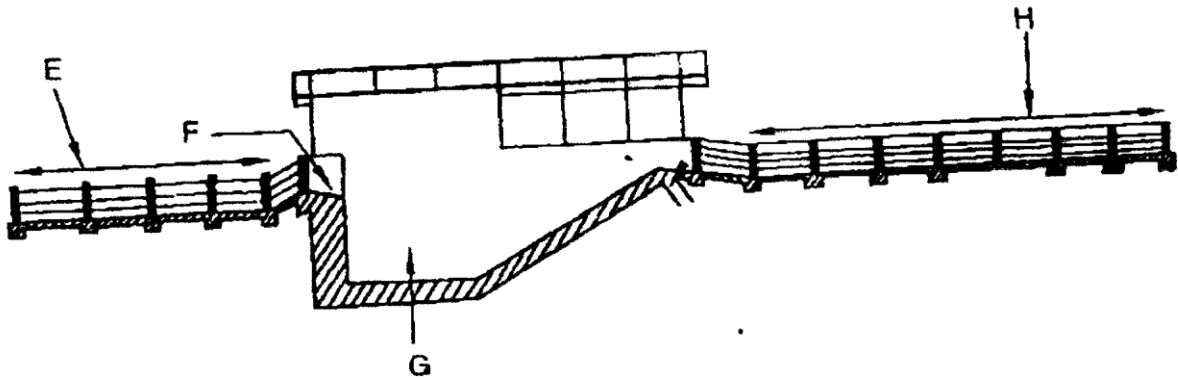
19. List down three roofing materials commonly used by farmers. (1 ½ Mark)

.....
.....
.....
.....
.....

SECTION B (20 MARKS)

Answer all questions in this section

20. The following farm structure is used in livestock management practice. Use it to answer the questions that follow.



- a) Identify the structure. (1 Mark)

.....
.....

- b) Label the parts named E to H. (2 Marks)

E.....

F.....

G.....

H.....

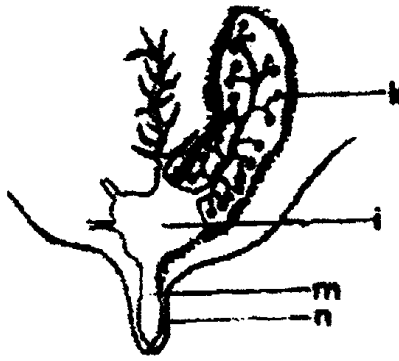
- c) What is the use of the parts labeled E and H.

E.....

H.....

21. Calculate how much of wheat (10% D.C.P) would be mixed with sunflower seed cake (35% DCP) to come up with 100kg duck mash 20% DCP using the Pearsons square method. (5 Marks)

22. The diagram below is a cross section of part of a cow's udder.



(a) Label on the diagram the parts marked k, l, m and n. (2mks)

.....

.....

.....

(b) (i) What is milk let down? (1 mk)

.....

.....

(ii) Which hormone stimulates milk let down. (1 mk)

.....

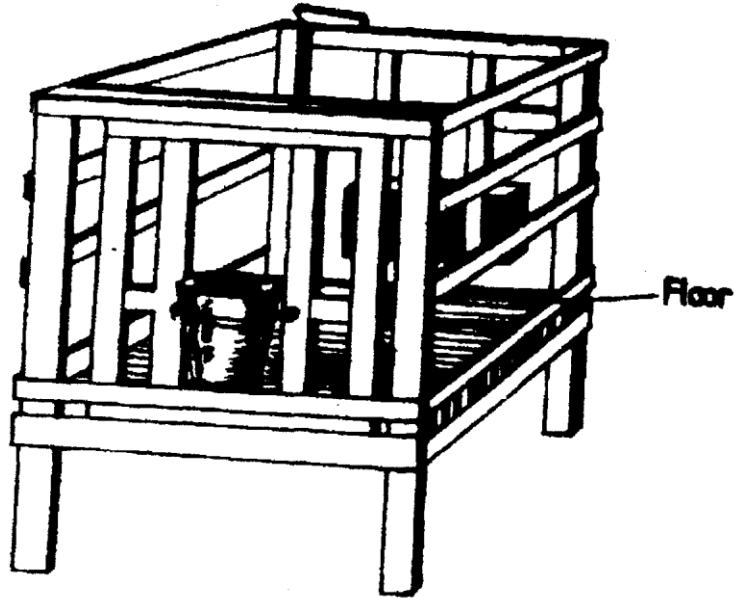
.....

(c) State one practice which is carried out to control mastitis in lactating cows. (1 mk)

.....

.....

23. The diagram below represents a calf pen. Study the diagram and answer the questions that follow.



- a) Identify the type of floor on the structure. (1 mk)
.....
.....
- b) Give one reason why the calf pen should be raised. (1 mk)
.....
.....
- c) State three factors that should be considered in sitting the calf pen. (3 mks)
.....
.....
.....
.....
.....

