

Name.....

Index No.....

School.....

Candidate's sign.....

Date.....

443/2  
AGRICULTURE  
PAPER 2  
July/August 2010  
2 hrs

**KWANZA DISTRICT JOINT EVALUATION EXAM – 2010**

*Kenya Certificate of Secondary Education (K.C.S.E)*

443/2  
AGRICULTURE  
PAPER 2  
July/August 2010  
2 hrs

**INSTRUCTIONS**

- Write your name and index number in the spaces provided.
- Sign and write the date of examination in the spaces provided above.
- This paper consists of Three sections A, B and C.
- Answer all questions in Section A and B
- Answer any two questions from Section C
- Answer to ALL questions MUST be written in the spaces provided.
- Ensure you have all pages printed and non is missing.

**FOR EXAMINER'S USE ONLY**

SECTION	QUESTIONS	MAXIMUM SCORE	CANDIDATES SCORE
A	1 – 21	30	
B	22 – 25	20	
C		20	
		20	
	<b>Total</b>	<b>90</b>	

*This paper consists of 12 printed pages. Candidates should check carefully to ascertain that all the pages are printed as indicated and no questions are missing.*

**SECTION A (30 MKS)**

*Answer ALL the questions in this section in the spaces provided.*

1. Give **four** characteristics of exotic cattle (*Bos Taurus*) that make them not survive well in arid areas. (2mks)

.....  
.....  
.....  
.....  
.....  
.....

2. State **three** reasons for debeaking birds in poultry management. (1½mks)

.....  
.....  
.....  
.....

3. Name any **four** infectious livestock disease causing organisms. (1½mks)

.....  
.....  
.....  
.....  
.....  
.....

4. Name the breed of the goat which is brown in colour with white stripes running down. The face to the nose. (½mk)

.....

5. List **four** components of power transmission system in a tractor. (2mks)

.....  
.....  
.....  
.....  
.....  
.....

6. Mention **two** reasons for choosing animal power instead of tractor power on the farm. (1mk)
- .....
- .....
- .....
- .....
7. State **four** advantages of using concrete in building farm structures. (2mks)
- .....
- .....
- .....
- .....
- .....
8. Give **three** advantages of using thatch as a roofing material in farm structures. (1½mk)
- .....
- .....
- .....
- .....
- .....
9. Name **two** examples of the harvesting machines commonly used on the farm. (1mks)
- .....
- .....
10. Give **four** reasons for culling a breeding boar (2mks)
- .....
- .....
- .....
- .....
- .....
11. State the cause of grass staggers in sheep (½mk)
- .....
- .....

12. State **four** qualities of good honey (2mks)

.....

.....

.....

.....

.....

13. Give **two** reasons for treating timber for constructing farm building. (2mks)

.....

.....

.....

14. State **two** functions of a footbath in a plunge cattle dip. (2mks)

.....

.....

.....

15. Give **three** maintenance particles carried out on a tractor trailer (1½mk)

.....

.....

.....

.....

.....

16. Give **three** reasons of spreading a polythene paper (P.V.C) on the slab of permanent farm building. (1½mk)

.....

.....

.....

.....

.....

17. State **two** functions of a coulter on a mould board plough. (1mk)

.....  
.....  
.....

18. State **two** functions of a carburetor in a petrol engine (2mks)

.....  
.....  
.....

19. State **four** roles played by the engine oil in a tractor engine. (2mks)

.....  
.....  
.....  
.....  
.....

20. State **two** functions of a piston in an engine. (1mk)

.....  
.....  
.....  
.....

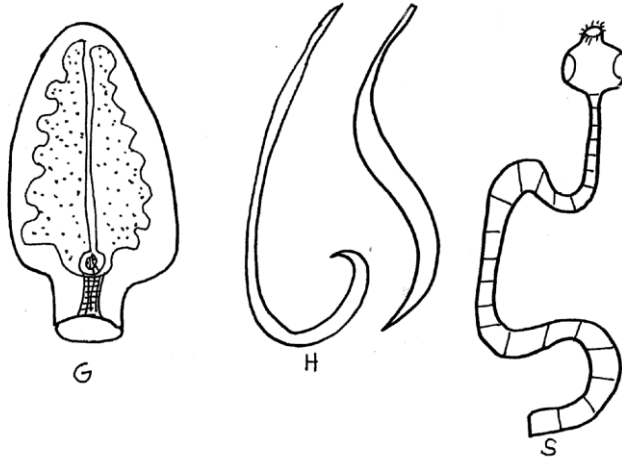
21. What is the difference between a tenon and a cross cut saw. (1mk)

.....  
.....  
.....  
.....  
.....

**SECTION B (20 MARKS)**

*Any ALL the questions in this section in the spaces provided.*

22. The diagrams labeled G,H, and S below illustrates three livestock parasites. Study them and answer the questions that follow: (1½mk)



- a) Identify the parasites: (1½mk)

G) .....

.....

H) .....

.....

S) .....

.....

- b) State the category to which the three parasites G, H, and S belong to (½mk)

.....

.....

- c) Name the parts of organs of the host body where parasites G and S are found respectively. (1mk)

G .....

.....

S.....

.....

- d) Name the intermediate hosts for each of the parasites G and H (1mk)

G .....

.....

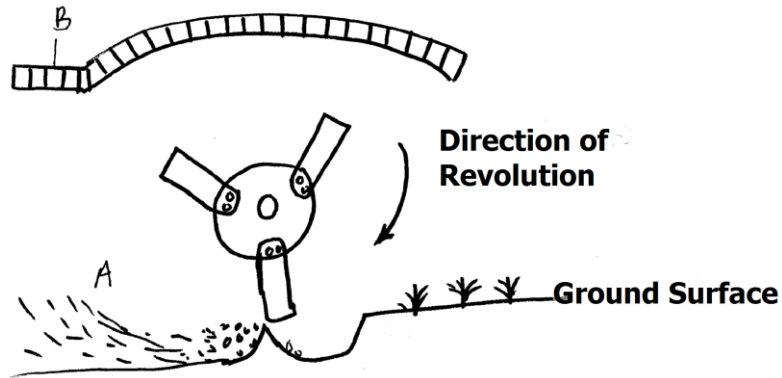
H.....

.....

e) State any **three** control measures of the parasite G (1½mk)

.....  
.....  
.....  
.....

23. The diagram labeled A below illustrates a farm implement. Study it and answer the questions that follow:



a) Identify the implement labeled A (1mk)

.....  
.....

b) State **two** field conditions where implement A is useful. (1mk)

.....  
.....  
.....

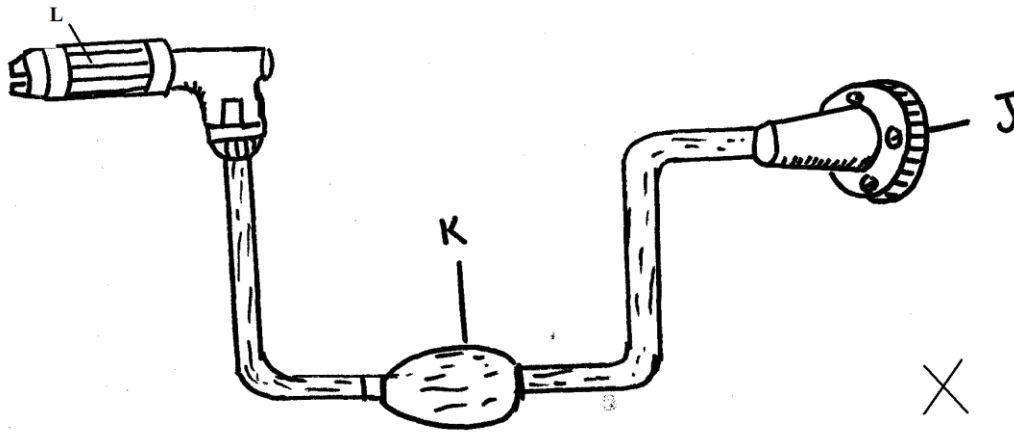
c) State **two** functions of the part of the implement labeled B. (1mk)

.....  
.....  
.....

d) Outline **three** major maintenance practices of the above implement. (1½mk)

.....  
.....  
.....  
.....  
.....

24. Study the diagram of a workshop tool illustrated below and answer the questions that follow:



a) Identify the tool labeled X above (1mk)

.....  
 .....

b) Name the parts labeled J, K and L (1½mk)

J) .....

K) .....

L) .....

c) State the use of the following: (½mk)

i) Tool X in (a) above

.....  
 .....

ii) Part labeled L on tools X in a) above (½mk)

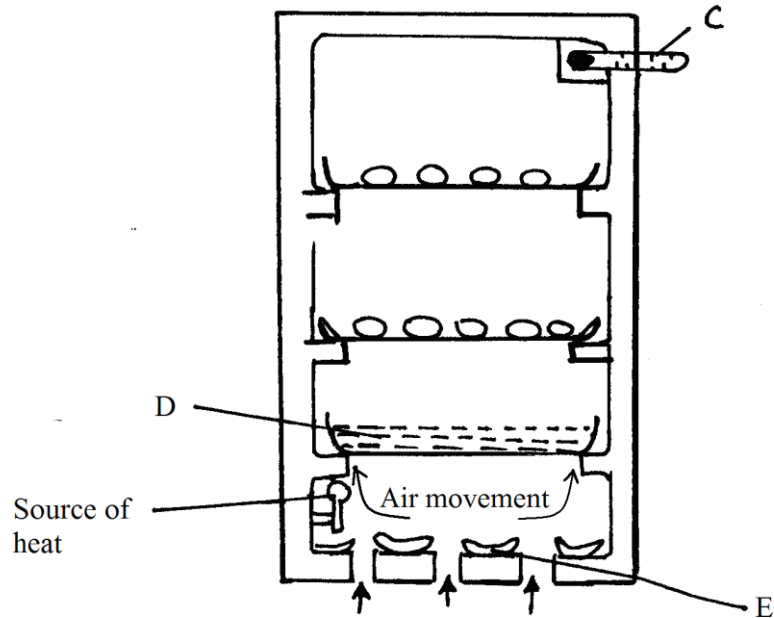
.....  
 .....

d) State **three** repair and maintenance practices that should be carried out on the tool X in a) above. (1½mk)

.....  
 .....  
 .....  
 .....  
 .....



25. The illustration below represents equipment used in poultry production. Study it carefully and answer the questions that follow:



a) Identify the equipment illustrated above. (1mk)

.....  
 .....

b) Name the parts labeled C, D and E on the diagram of the equipment illustrated on the equipment in a) above (1½mk)

C) .....

D) .....

E) .....

c) What are the functions of the parts labeled C, D and E (1½mk)

C) .....

.....

D) .....

.....

E) .....

.....

d) Why is it important to turn the eggs around 180° every 6 – 8 hours (1mk)

.....  
 .....

**SECTION C (40 MARKS)**

*Answer any two questions from this section in the answer sheet booklet provided*

*Or foolscaps attached, after questions 28.*

26. a) Describe the procedure of constructing a barbed wire fence (10mks)  
b) Discuss the advantages of four stroke engines on the farm. (5mks)  
c) Explain the importance of dehorning animals on the farm. (5mks)
27. Describe fish management under the following sub headings:  
a) Procedure for establishing a pond. (10mks)  
b) Stocking the pond. (3mks)  
c) Management practices that would ensure maximum harvest of fish from the pond. (5mks)  
d) Methods of preserving fish (2mks)
28. a) Describe Newcastle disease under the following subheadings.  
i) Animals attacked (1mk)  
ii) Incubation period (1mk)  
iii) Causal Agent (1mk)  
iv) Symptoms (4mks)  
v) Prevention and control (3mks)
- b) Describe the management practices that a farmer should carry out on piglet from birth to weaning. (10mks)

.....  
.....  
.....  
.....  
.....  
.....  
.....  
.....  
.....  
.....  
.....  
.....  
.....  
.....  
.....  
.....  
.....  
.....  
.....  
.....  
.....  
.....  
.....  
.....  
.....  
.....  
.....  
.....  
.....  
.....  
.....  
.....  
.....  
.....  
.....  
.....  
.....  
.....  
.....  
.....  
.....  
.....  
.....  
.....  
.....  
.....  
.....  
.....  
.....  
.....  
.....  
.....  
.....  
.....  
.....  
.....  
.....  
.....  
.....  
.....  
.....  
.....  
.....  
.....  
.....  
.....

