

Name.....

Index No.

School

443/1

AGRICULTURE

Paper 1

JULY/AUG. 2010

Time: 2 Hours

BORABU- MASABA DISTRICT NORTH JOINT EVALUATION TEST – 2010
Kenya Certificate of Secondary Education (K.C.S.E)

AGRICULTURE

Paper 1

JULY/AUG. 2010

Time: 2 Hours

INSTRUCTIONS TO CANDIDATES

- Write your Name and index numbers in the spaces provided above.
- This paper consists of three sections A, B & C.
- Answer all the questions in section A and B and any TWO questions in section C.
- All answers must be written in the spaces provided in this booklet
- Do not remove any pages in this booklet

FOR EXAMINER'S USE ONLY

SECTION	QUESTION	SCORE
A	1 – 20	
B	21 – 24	
C	25 - 27	
TOTAL SCORE		

*This paper consists of 12 printed pages.
Candidates should check the question paper to ensure that all pages are printed as indicated
and no questions are missing*

SECTION A – 30MKS
Answer all Questions in this section

1. Give **three** types of a product – product relationship in production economics (1 ½mks)
.....
.....
.....

2. State **four** farming practices that improve soil structure (2mks)
.....
.....
.....

3. Give **four** reasons for practising minimum tillage (2mks)
.....
.....
.....

4. State **three** biotic factors that influence agriculture positively (1 ½mks)
.....
.....
.....

5. At what stage of growth should paddy rice be transplanted? (½mk)
.....
.....

6. State **four** factors that determine the type of irrigation that can be used in a given area (2mks)
.....
.....
.....

7. Distinguish between pinching out and copping (1mk)
.....
.....

.....
.....

8. State any **three** cultural pest control measures in crop production (1 ½mks)

.....
.....

9. State **two** practices used to control maize streak in the field (1mk)

.....
.....

10. Outline **four** factors that affect the quality of silage (2mks)

.....
.....
.....
.....

11. List **four** materials that may be used for constructing gabions (2mks)

.....
.....
.....
.....

12. State any **three** factors considered when selecting materials for crop propagation (1 ½mks)

.....
.....
.....
.....

13. State **two** symptoms of sulphur deficiency in plants (1mk)

.....
.....

14. Give **two** economic importances of crop diseases to a farmer (1mk)

.....
.....

15. State **four** reasons why grafting is considered an aspect of crop improvement (2mks)

.....
.....
.....
.....

16. What is agro forestry (1mk)

17. Define elasticity of demand (1mk)

18. Outline the importance of sub-soiling in crop production (2mks)

19. State the objectives of land reform (2mks)

20. List **three** uses of a farm inventory (1 ½mks)

SECTION B (20MKS)

Answer all questions in this section

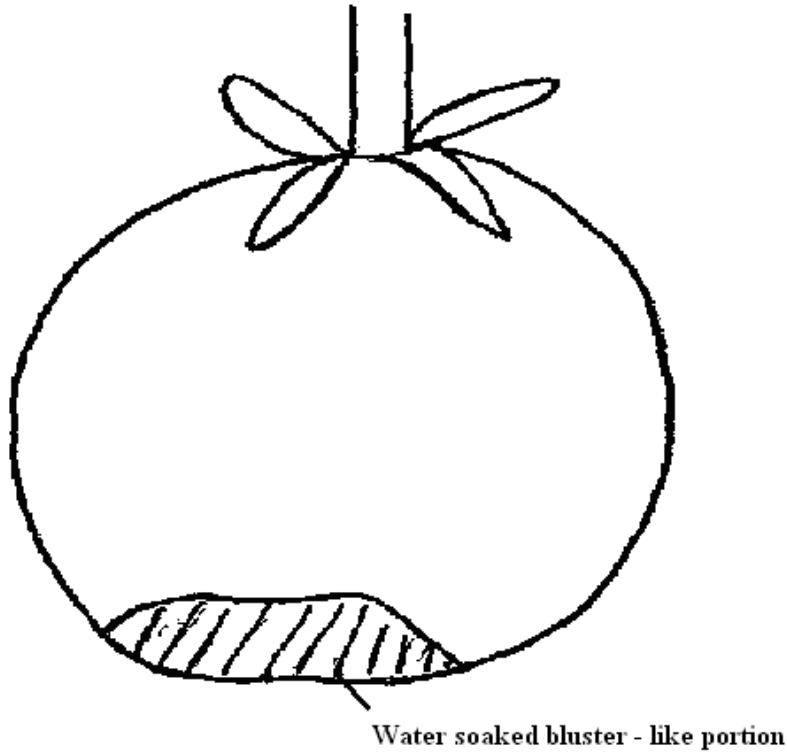
21. a) Give any **two** advantages of a mixed grass legume over a pure grass pasture (2mks)

- b) State **two** methods of conserving pasture in the farm (1mk)

- c) Calculate the amount of K₂O contained in a 200kg of a compound fertilizer 20:20:10 (2mks)

.....
.....
.....
.....

d) The diagram below shows a physiological condition in tomatoes. Use it to answer the Questions that follow



i) Identify the condition (1mk)

.....

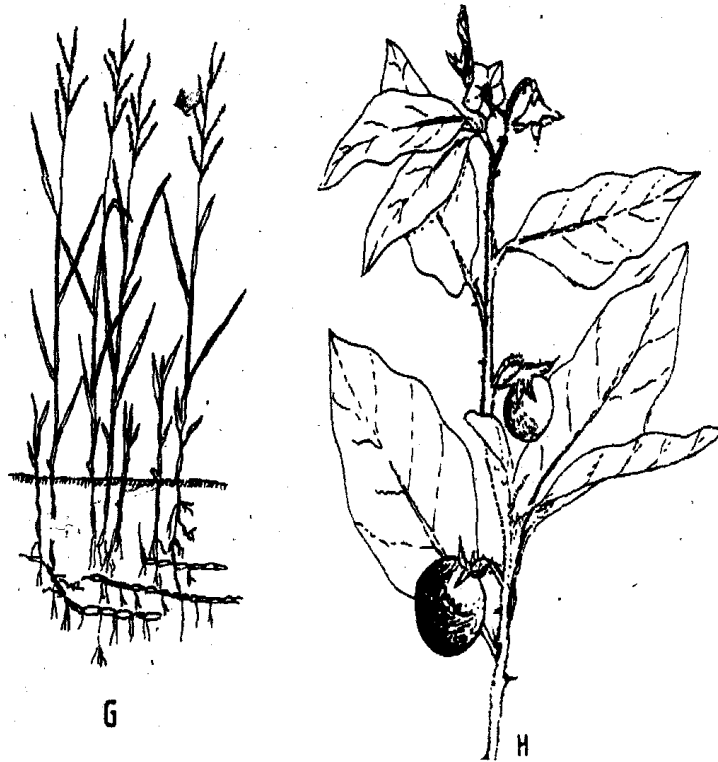
ii) Give three causes of the condition identified in (i) above (3mks)

.....
.....
.....
.....
.....
.....
.....

iii) Apart from the condition above, state **one** disease which affects tomatoes (1mk)

.....
.....
.....

Diagrams G and H show weeds



a) Identify the weeds G and H (1mk)

G
.....
.....
.....
H
.....
.....
.....

b) State any economic importance of the weed shown in diagram G (1mk)

.....
.....
.....

c) Why is it difficult to control the weed in diagram G (1mk)

.....
.....
.....

d) Give **two** adaptive abilities of weeds to propagation (2mks)

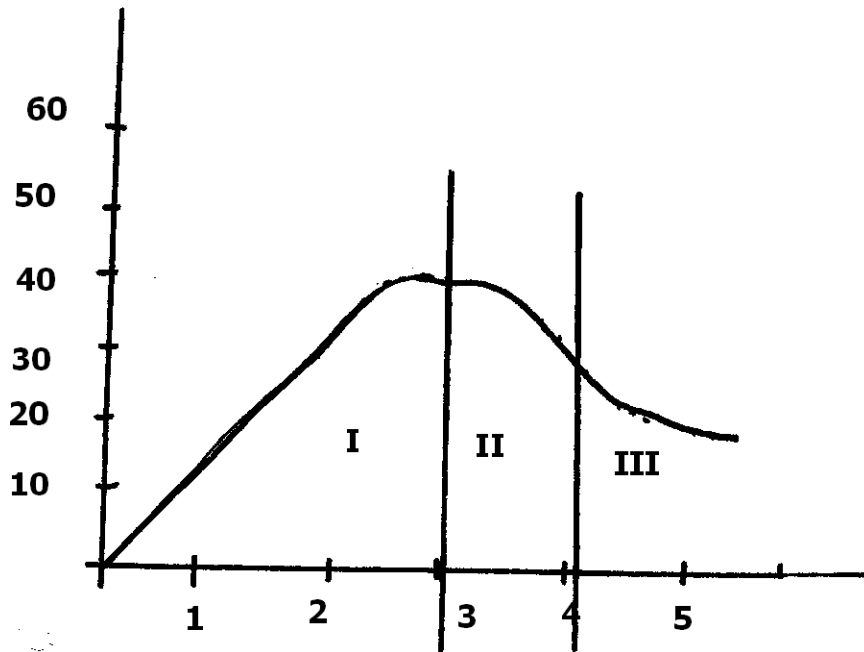
.....

.....

.....

.....

24. Below is a graphical representation of an economics law



a) Name the law illustrated by the graph above (1mk)

.....

.....

.....

b) Explain what happening in each of the Zones marked I, II, and III (3mks)

.....

.....

.....

.....

.....

.....

- c) Which of the **three** is a rational zone of production? (1mk)

.....

SECTION C (40 MARKS)

Answer any two questions in this section on the spaces provided at the end of the section

25. Discuss the field production of maize under the following sub - headings
- a) Land preparation (5mks)
 - b) Planting (6mks)
 - c) Field practices (5mks)
 - d) Harvesting (4mks)
26. a) The information below was obtained from Mr. Mogaka’s farm for the year ending 31st Dec 2009. Use the information to prepare a profit and loss account for the farm
- During the year the farm made the following transactions, maize seeds Ksh.10,000, D.A.P fertilizer Ksh.25000, tractor disc plough Ksh.50,000, fuel for tractor Ksh 12,000, Dairy meal Ksh 20,000, Milking cans Ksh.2000, Knapsack sprayer Ksh.6,500, Herbicides Ksh.18000.
- The farm also made the following sales maize to N.C.B.P worth Ksh.210,000, milk to K.C.C Ksh.500,000 and weaners Ksh 35,000
- Other information from the books of records showed that the farm had an opening valuation of Ksh.300, 000 and closing valuation of Ksh 600,000. Other extra information given were debts receivable for tractor services were Ksh.28, 000. Interest payable to the bank Ksh.3000 and Depreciation of machinery worth Ksh. 7,500 (12mks)
- b) How can labour productivity be improved in the farm (5mks)
 - c) State **three** factors that may determine the demand of a commodity (3mks)
27. a) Outline problems associated with credit facilities to farmers (4mks)
- b) Explain the basic principles that govern co- operatives (8mks)
 - c) Explain the functions of the Kenya Dairy Board as a marketing board (8mks)

.....

A series of horizontal dotted lines for writing, spanning most of the page width.

.....
.....
.....
.....
.....
.....
.....
.....
.....
.....
.....
.....
.....
.....
.....
.....
.....
.....
.....
.....
.....
.....
.....
.....
.....
.....
.....
.....
.....
.....
.....
.....
.....
.....
.....
.....
.....
.....
.....
.....
.....
.....
.....
.....
.....
.....
.....
.....
.....
.....
.....
.....
.....
.....
.....
.....
.....
.....

