

NAME:.....INDEX .....DATE.....

SCHOOL:.....SIGNATURE.....

443/2  
AGRICULTURE  
PAPER 2  
JULY/AUGUST 2010  
TIME: 2HOURS

# JOINT INTER-SCHOOLS EVALUTION TEST (JISSET) Kenya Certificate of Secondary Education 2010

443/2  
AGRICULTURE  
PAPER 2

## INSTRUCTIONS TO CANDIDATES.

1. Write your name and index number in the spaces provided above
2. Sign and write the date of examination in the spaces provided.
3. This paper consists of *THREE* sections A, B, and C.
4. Answer *ALL* questions in section A and B and any *TWO* question in section C.
5. Write your answer in spaces provided.

### For Examiners' Use Only

Section	Question	Maximum Score	Candidates score
A	1-16	30	
B	16-18	20	
C	19	20	
	20	20	
	21	20	
<b>Total score</b>		<b>90</b>	

## SECTION A (30MKS)

*Answer ALL questions in this section in spaces provided*

1. Give **four** disadvantages of pastoral-nomadism (2mks)

.....  
.....

.....  
.....  
.....

2. List **four** tools used in laying concrete blocks when constructing a wall (2mks)

.....  
.....  
.....

3. State **four** factors that would determine the use of a JEMBE instead of a DISC PLOUGH. (2mks)

.....  
.....  
.....  
.....  
.....  
.....  
.....  
.....  
.....  
.....

4. Give **four** characteristics that make indigenous cattle suitable to tropical conditions (2mks)

.....  
.....  
.....  
.....  
.....

5. Mention **four** reasons for keeping health records in Livestock production (2mks)

.....  
.....  
.....  
.....  
.....

6. State **four** signs of parturition in cows (2mks)

.....  
.....  
.....  
.....  
.....

7. List **six** features of an ideal calf pen (3mks)

.....  
.....  
.....  
.....  
.....

8. Give **four** advantages of Kenya Top Bar Hive (KTBH) over Log Hives (2mks)

.....  
.....  
.....  
.....  
.....  
.....

9. Give **two** functions of a carburetor in petrol engines (1mk)

.....  
.....  
.....  
.....

10. State **four** functions of the lubrication system in a tractor (2mks)

.....  
.....  
.....  
.....

11. Give **four** advantages of embryo transplant in livestock breeding (2 mks)

.....  
.....  
.....

.....  
.....  
.....  
.....  
.....

12. Outline **four** non-chemical methods of controlling ticks in cattle (2mks)

.....  
.....  
.....  
.....  
.....

13. Give **four** factors that determine the nutritional requirement in cattle (2mks)

.....  
.....  
.....  
.....  
.....

14. Give **two** reasons for proper maintenance of farm structures (1mk)

.....  
.....  
.....  
.....  
.....

15. State **four** symptoms of New castle disease in poultry production (2mks)

.....  
.....  
.....  
.....  
.....

16. Give **two** features that enable the gizzard carry out its functions effectively (1mk)

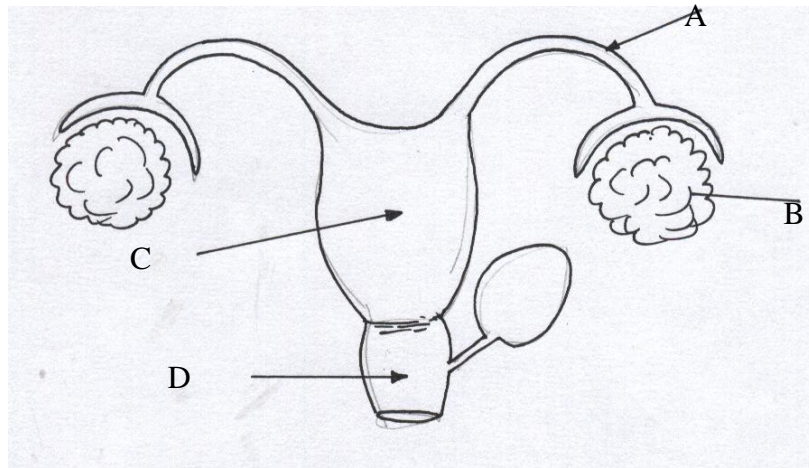
.....  
.....

.....  
.....

**SECTION B (20MKS)**

**Answer ALL questions in this section in the spaces provided.**

17.(a) The diagram below illustrates the reproductive system of a farm animal. Study it and answer the questions that follow



i. Name the parts labeled A, B, C and D (2mks)

A .....

B .....

C .....

D .....

ii. State the functions of the parts labeled A and B (2mks)

A

.....

.....

B

.....

.....

.....

(b) Give four signs of Oestrus in cows (2mks)

.....

.....

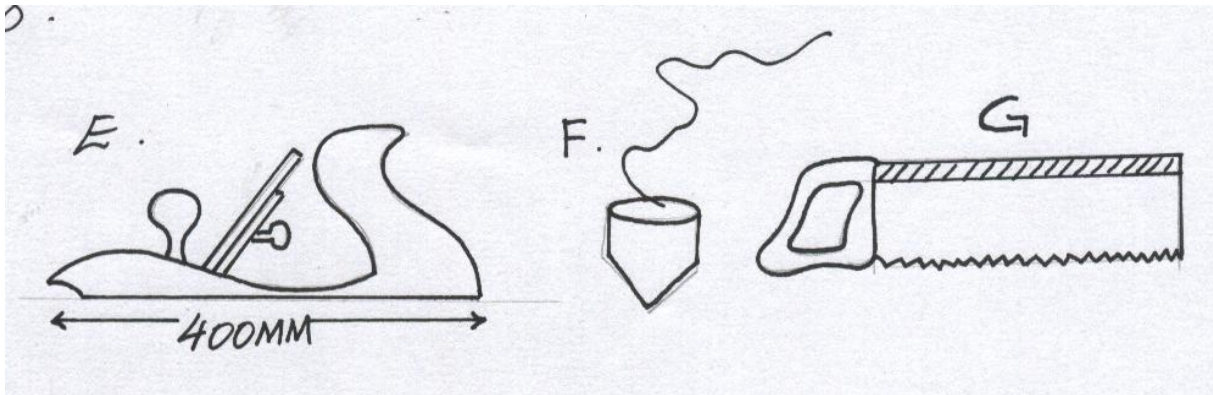
.....

.....

(c) State four disadvantages of natural mating in dairy production (4mks)

.....  
.....  
.....

18. Below is an illustration of farm tools and equipment. Study them and answer the questions that follow



i. Identify the tools labeled E, F and G (2mks)

E .....

F .....

G .....

ii. State the functions of tools labeled F and G (2mks)

..... F

..... G

.....

iii. Give three maintenance practices of the tool labeled E (3mks)

.....

.....

.....

iv. State the functional difference between drenching gun and bolus gun (2mks)

.....

.....

.....











