

## JOINT INTERSCHOOLS EVALUATION TESTS

### JISSET 2009

#### SECTION A (30mrks)

Answer ALL questions in this section in the spaces provided.

1. Give **two** reasons for hoof trimming in sheep production. 1mk
2. State **four** advantages of Battery system of Poultry rearing. 2mks
3. Give **four** characteristics that make Zebu cattle to be more adapted to tropical conditions than exotic breeds. 2mks
4. What do you understand by the term “**cropping**” as used in fish farming? 1mk
5. List **four** implements used to carry out secondary cultivation. 2mks
6. What is “**Hybrid vigour**” as used in livestock breeding? 1mk
7. Give **three** advantages of Embryo transplant technology 1 ½ mks
8. State **four** desirable features of a rabbit hutch. 2mks
9. Give **three** disadvantages of using steel materials in construction of farm Structures. 1½mks
10. State **four** control measures of cannibalism in flock of layers in deep litter systems of poultry rearing. 2mks
11. What is the **difference** between Tenon saw and Cross- cut saw ? 1mk
12. Name **two** tools used for cutting Galvanized iron pipes. 1mk
13. Give **two** reasons for applying oils and grease on a rotary mower. 1mk
14. State **four** conditions under which a farmer would use animal power instead of tractor power for seedbed preparation. 2mks
15. State **four** disadvantages of natural mating in dairy cattle. 2mks
16. State **two** advantages of cross breeding in livestock production. 1mk
17. State **three** ways of preparing the sow for furrowing. 1 ½ mks

18. Give **three** reasons necessitating the

culling of a Ram.

1

½ mks

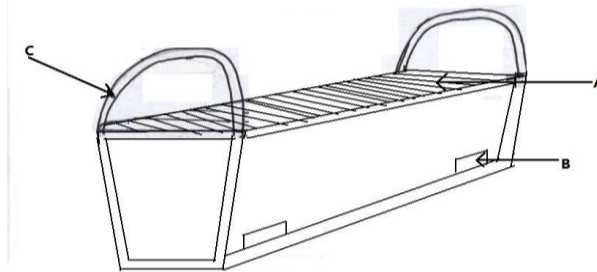
19. State **four** factors that determine maintenance ration in livestock production. 2mks

20. Give **two** reasons why Ewe may disown their lamb soon after lambing. 1mk

**SECTION B (20marks)**

Answer ALL questions in this section in the spaces provided.

21. Below is a diagram illustrating a bee-hive. Study it carefully and answer questions that follow.



(a) (i) **Identify** the type of bee-hive illustrated above.

1mk

(ii) Name the parts labeled A, B, and C.

1 ½ mks

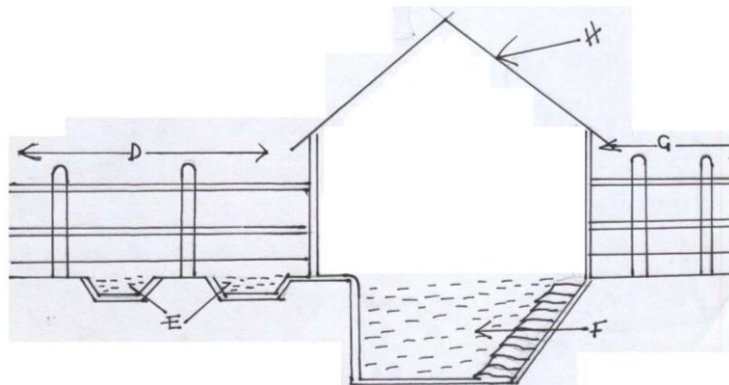
A: .....

B: .....

C: .....

(iii) **State three** advantages of the above Bee-hive compared with other hives. 3mks

(b) Below is a diagram of an animal handling structure. Study it and answer the questions that follow.



(i) **Identify** the farm structure illustrated above.

2mks

(ii) **Name** the parts labeled D E F G and H.

2 ½ mks

D: .....

E: .....

F: .....

G: .....

H: .....

(iii) State the function of the parts labeled E and G

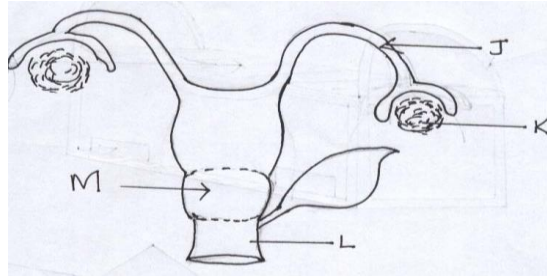
2mks

E: .....

G: .....

(iv) Give two uses of the part labeled H 2mks

22. The diagram below shows the reproductive system of a cow. Study it carefully and answer the questions that follow.



(a)

(i) Name the parts labeled J, K, L and M. 2mks

J: .....

K: .....

L: .....

M: .....

(ii) State the function of each of the parts labeled J and K. 2mks

J: .....

K: .....

(b) State three signs of parturition in cows. 3mks

**SECTION C (40marks)**

**Answer any TWO questions in this section in the spaces provided after question (25)**

23. (a) **State FOUR** importance farm mechanization. 4mks
- (b) **State SIX** factors that a farmer should consider before buying a tractor for use as a source of farm power. 6mks
- (c) **Explain FIVE** operational differences between a disc plough and mould board plough. 10mks
24. **Describe** the management of sheep starting from preparation for mating up to and including weaning of lambs. 20mks
25. (a) **State THREE** reasons for seasoning wood/timber before use in construction of farm structures. 3mks
- (b) **State SEVEN** factors that determine the choice of materials for construction of farm structures. 7mks
- (c) **Explain** the factors considered when sitting farm structures. 10mks