

NAME: ..... INDEX NO: .....  
SCHOOL:.....

Candidates signature: .....  
Date: .....

443/2  
AGRICULTURE  
PAPER 2  
JULY / AUGUST 2010  
2 HOURS

**KAKAMEGA NORTH DISTRICT JOINT EVALUATION TESTS**  
**Kenya Certificate of Secondary Education (K.C.S.E) 2010**

443 / 2  
AGRICULTURE  
PAPER 2

**INSTRUCTIONS TO CANDIDATES**

- ❖ Write your name and index number in the spaces provided.
- ❖ This paper consists of three sections A, B and C
- ❖ Answer ALL questions in section A and B and any TWO questions in section C
- ❖ Answers to ALL questions MUST be written in the spaces provided.

**For Official Use Only**

SECTION	QUESTION	MAXIMUM SCORE	CANDIDATES SCORE
A	1 – 20	30	
B	21 – 22	20	
C		20	
		20	
Total Score		90	

This paper consists of 12 printed pages. Candidates should check the question paper to ensure that all the pages are printed as indicates and no questions are missing.

**SECTION A (30mrks)**

**Answer ALL questions in this section in the spaces provided.**

1. Give **two** reasons for hoof trimming in sheep production. 1mk

.....  
.....  
.....  
.....

2. State **four** advantages of Battery system of Poultry rearing. 2mks

.....  
.....  
.....  
.....  
.....  
.....  
.....  
.....

3. Give **four** characteristics that make Zebu cattle to be more adapted to tropical conditions than exotic breeds. 2mks

.....  
.....  
.....  
.....  
.....  
.....  
.....  
.....

4. What do you understand by the term “**cropping**” as used in fish farming? 1mk

.....  
.....  
.....  
.....

5. List **four** implements used to carry out secondary cultivation. 2mks

.....  
.....

.....  
.....  
.....  
.....  
.....

6. What is “**Haybrid vigour**” as used in livestock breeding? 1mk

.....  
.....  
.....

7. Give **three** advantages of Embryo transplant technology 1 ½ mks

.....  
.....  
.....  
.....  
.....

8. State **four** desirable features of a rabbit hutch. 2mks

.....  
.....  
.....  
.....  
.....  
.....  
.....

9. Give **three** disadvantages of using steel materials in construction of farm Structures. 1½mks

.....  
.....  
.....  
.....

.....  
.....

10. State **four** control measures of cannibalism in flock of layers in deep litter systems of poultry rearing. 2mks

.....  
.....  
.....  
.....  
.....  
.....  
.....

11. What is the **difference** between Tenon saw and Cross- cut saw ? 1mk

.....  
.....  
.....

12. Name **two** tools used for cutting Galvanized iron pipes. 1mk

.....  
.....  
.....

13. Give **two** reasons for applying oils and grease on a rotary mower. 1mk

.....  
.....  
.....  
.....  
.....

14. State **four** conditions under which a farmer would use animal power instead of tractor power for seedbed preparation. 2mks

.....  
.....  
.....  
.....  
.....  
.....  
.....

15. State **four** disadvantages of natural mating in dairy cattle. 2mks

.....  
.....  
.....  
.....  
.....  
.....  
.....

16. State **two** advantages of cross breeding in livestock production. 1mk

.....  
.....  
.....

17. State **three** ways of preparing the sow for furrowing. 1 ½ mks

.....  
.....  
.....  
.....  
.....

18. Give **three** reasons neccessitating the culling of a Ram. 1 ½ mks

.....  
.....

.....  
.....  
.....  
.....

19. State **four** factors that determine maintenance ration in livestock production. 2mks

.....  
.....  
.....  
.....  
.....  
.....  
.....  
.....

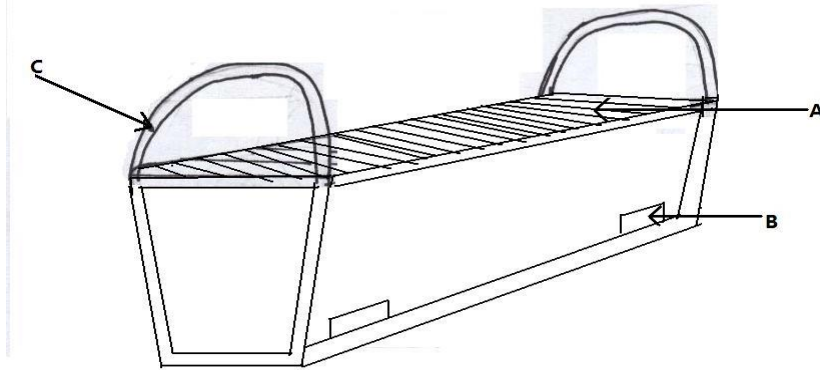
20. Give **two** reasons why Ewe may disown their lamb soon after lambing. 1mk

.....  
.....  
.....  
.....

**SECTION B (20marks)**

**Answer ALL questions in this section in the spaces provided.**

21. Below is a diagram illustrating a bee-hive. Study it carefully and answer questions that follow.



(a) (i) **Identify** the type of bee-hive illustrated above. 1mk

.....  
 .....

(ii) Name the parts labeled A, B, and C. 1 ½ mks

A: .....

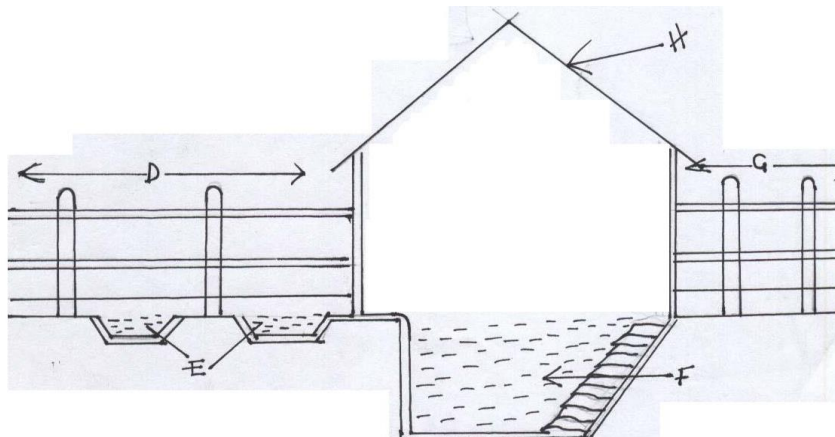
B: .....

C: .....

(iii) **State three** advantages of the above Bee-hive compared with other hives. 3mks

.....  
 .....  
 .....  
 .....  
 .....

(b) Below is a diagram of an animal handling structure. Study it and answer the questions that follow.



(i) **Identify** the farm structure illustrated above. 2mks

.....  
.....

(ii) **Name** the parts labeled D E F G and H. 2 ½ mks

- D: .....
- E: .....
- F: .....
- G: .....
- H: .....

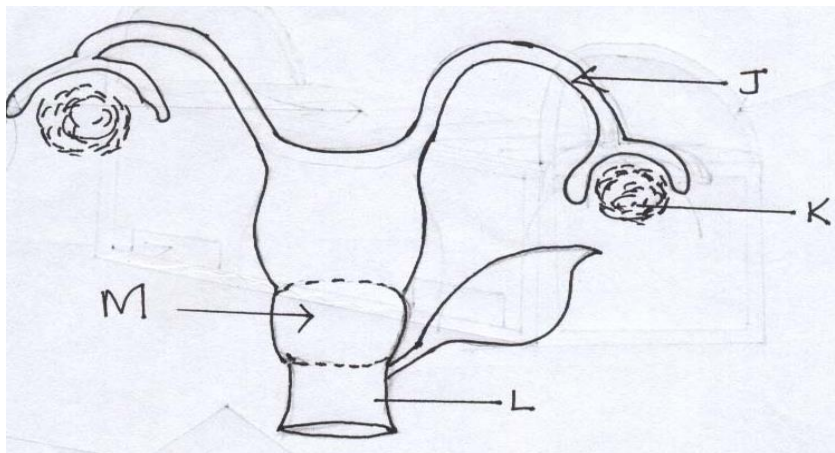
(iii) **State** the function of the parts labeled E and G 2mks

- E: .....
- G: .....

(iv) Give **two** uses of the part labeled H 2mks

.....  
.....  
.....  
.....

22. The diagram below shows the reproductive system of a cow. Study it carefully and answer the questions that follow.



(a) (i) **Name** the parts labeled J, K ,L and M. 2mks

- J: .....
- K: .....
- L: .....
- M: .....



(ii) State the function of each of the parts labeled J and K. 2mks

J: .....

K: .....

(b) State three sign of parturition in cows. 3mks

.....  
.....  
.....

**SECTION C (40marks)**

**Answer any TWO questions in this section in the spaces provided after question (25)**

23. (a) **State FOUR** importance farm mechanization. 4mks

(b) **State SIX** factors that a farmer should consider before buying a tractor for use as a source of farm power. 6mks

(c) **Explain FIVE** operational differences between a disc plough and mould board plough. 10mks

24. **Describe** the management of sheep starting from preparation for mating up to and including weaning of lambs. 20mks

25. (a) **State THREE** reasons for seasoning wood/timber before use in construction of farm structures. 3mks

(b) **State SEVEN** factors that determine the choice of materials for construction of farm structures. 7mks

(c) **Explain** the factors considered when sitting farm structures. 10mks

.....  
.....  
.....  
.....













