

# AGRICULTURE

## PAPER 1

4431/1

4MCK JOINT EXAM 2016

AGRICULTURE PAPER 1

NAME: \_\_\_\_\_ INDEX NO.: \_\_\_\_\_

ADM. NO. \_\_\_\_\_ CLASS: \_\_\_\_\_

### INSTRUCTION TO CANDIDATES

This paper consists of **three** sections A, B and C.

Answer **All** questions in section A and B.

Answer any **Two** questions in section C.

	<b>Questions</b>	<b>Max score</b>	<b>Candidates Score</b>
Section A	1 – 17	30	
Section B	18 – 20	20	
Section C	21 - 23	40	
<b>Total Score</b>		90	

**SECTION A: 30 MARKS**

Answer All the questions in this section in the space provided.

1.a)State two field management practices carried out to have optimum plant population in crop production. 1mk

.....

b)Outline how each of the practices stated in (a) are achieved. 1mk

.....

2.State four disadvantages of using organic manure in field where crops are grown. 2mks

.....

.....

.....

.....

3.Name two vegetative parts used to propagate Napier. 1mk

.....

.....

4.Give the meaning of the term “closed season” as used in crop production. 1mk

.....

5.State four factors that determine the choice of implements for primary cultivation. 2mks

.....

.....

.....

6.State four factors that determine the spacing of a crop to be planted. 2mks

.....

.....

.....

.....  
7. Give two ways in which pastures are classified on the basis of stand. 1mk

.....  
.....  
8. State three disadvantages of vegetatively propagating pineapples. 1 ½ mks

.....  
.....  
9. State four ways in which land reform can be implemented for better Agricultural use in Kenya. 2mks

.....  
.....  
10. State three methods of harvesting trees in agro forestry. 1 ½ mks

.....  
.....  
11. State three disadvantages of using plastic pipes to convey water in the farm. 1 ½ mks

.....  
.....  
12. How can agriculture increase the gross domestic product (GDP) of a country? 1mk

.....  
.....  
13. State four factors that influence the number of harrowing in field preparation. 2mks

.....  
.....  
14.a) Define the term "Economic injury Level" in crop protection. 1mk

.....  
.....  
b) State four disadvantages of chemical pest control method in crop production. 2mks

.....  
.....  
15. State four ways of increasing labour productivity in the farm. 2mks

.....  
.....  
16. State four qualities of mother plant which should be considered when selecting vegetative materials for planting. 2mks

.....  
.....  
17. State five qualities that should be considered when selecting seeds for planting. 2 ½ mks

.....  
.....  
**SECTION B: (20 MARKS)**

Answer **all** the questions in this section in the spaces provided.

18. The table below shows PH values of different soils samples. Study it and answer the questions that follow:

Soil	PH values
S1	3
S2	4
S3	5
S4	6
S5	7
S6	8
S7	9
S8	10

a)i) Which soil sample has the highest acidity?

1 mk

ii) State two ways in which the PH value can be lowered.

2 mks

iii) Which of the above soil samples is suitable for growing tea?

1 mks

b) The diagram below illustrates a planting material prepared for planting. Study it carefully and answer the questions that follow:



i) Name the planting material.

1 mk

.....

ii)Name the practice used in preparing the planting material for planting. 1mk

.....

iii)Describe the procedure followed in preparing the planting material. 3mks

.....  
.....  
.....  
.....  
.....  
.....  
.....

19.The table below shows the population and gross domestic products of countries A and B.

Country	Gross Domestic Product (GDP) million shs.	Population (mill)
A	1800	36
B	1200	15

for more free past papers visit: [www.freekcsmpastpapers.com](http://www.freekcsmpastpapers.com)

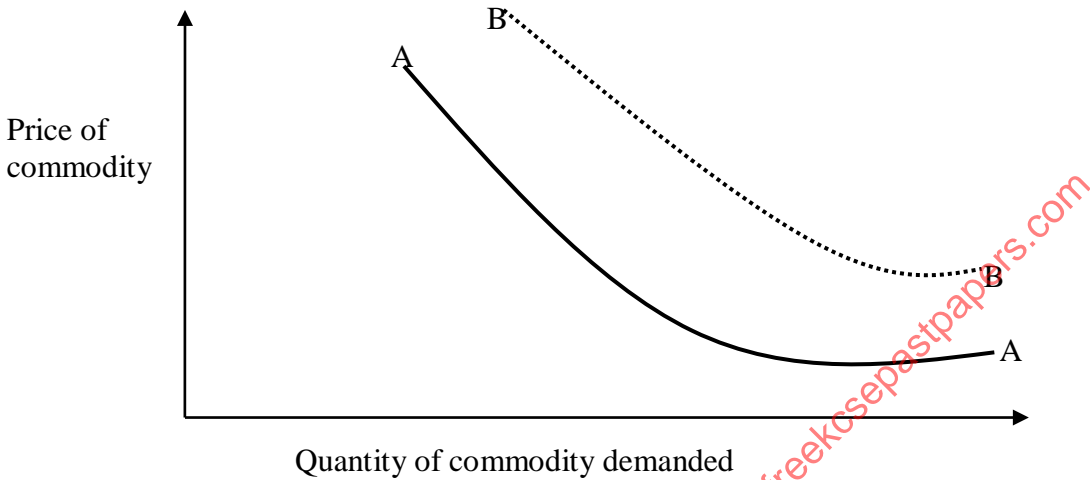
a)i)Calculate the per capital income for each country. Show your working. 2mks

ii)Which of the two countries is more developed economically? 1mk

.....

iii)Give a reason for your answer in (b) above. 1mk

.....  
.....  
.....  
b)The illustration below shows the law of demand in agricultural marketing. Study it and answer the questions that follow:



i)Give a reason for the shape of the curve labeled A. 1mk

.....  
ii)If the price of the commodity remains constant, explain three factors that can cause the curve to shift from A to B. 3mks

.....  
.....  
.....  
20. Below are photographs of some common weeds. Study them carefully and answer the questions that follow:

Weed M



Weed L



a) Identify weeds M and L.

1mk

M - .....

L - .....

ii) Give one economic disadvantage of weed M.

1mk

iii) Why is it difficult to control weed L?

1mk

**SECTION C: (40 MARKS)**

Answer any **two** questions from this section in the answer sheets provided.



- 1.a) State and explain **five** ways of adjusting to risks and uncertainties a farmer can adopt. 10mks
- b) Outline **five** problems making Agriculture credit in accessible to farmers. 10mks
- 22.a) Explain **five** ways in which maize production can be improved to ensure food security in Kenya. 10mks
- b) Outline **four** methods of land clearing. 4mks
- c) State **six** importance's of Primary cultivation. 6mks
- 23.a) Describe the establishment of Kales under the following subheadings:
- i) Management of seedlings in the nursery. 5mks
- ii) Transplanting of seedlings. 8mks
- b) Why is pruning done in crop production? 7mks

for more free past papers visit: [www.freekcsepastpapers.com](http://www.freekcsepastpapers.com)